

QUEEN ANNE CO-OP FOR RENT

2 BEDROOMS & 1.5 BATHROOMS



500 West Olympic Place, #305 Seattle 98119

Available

- 2 Bedrooms & 1.5 Bathrooms with One Assigned Parking Space at \$40/month
- 1 year lease at \$2,600/month plus \$2,000 Security Deposit with last month's rent
- No Pets and No Smoking

Description

Be dazzled by panoramic southern views of downtown Seattle, Mt Rainier, West Seattle & Puget Sound that grace this amazing 2 bedroom home. An open floor plan flows seamlessly from living to dining to an updated kitchen & in-unit washer/dryer. New paint, 1.5 baths, wall mount HD TV & incredible built-in cabinets in the dining room provide ample storage. A walkscore of 86 puts you moments away from beautiful Queen Anne parks, restaurants, coffee shops, boutiques & more.

**YATES
WOOD**

**BROKERAGE
& PROPERTY
MANAGEMENT**

For more information, please contact:

Mercy Gregorio 206 427 6535
mercy@yateswood.com

The information contained herein has been given to YW&M by the owners or sources that we deem reliable. We have no reason to doubt its accuracy, but we do not guarantee information contained herein.

Since 1944

Yates, Wood & MacDonald, Inc., 425 Pontius Ave N Suite 203, Seattle, WA 98109
f 206 268 3330 p 206 268 3300 www.yateswood.com

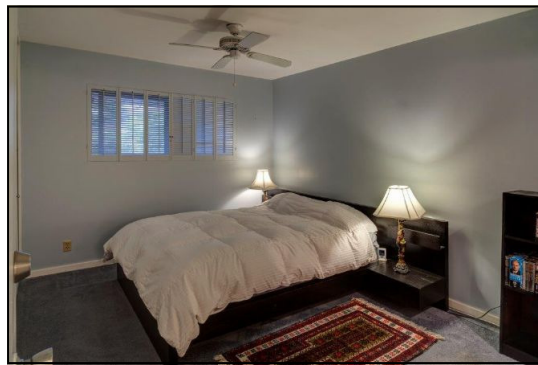
Queen Anne Co-op



City View from Patio



Kitchen with Washer & Dryer



Master Bedroom



Open Living &
Dining Room
with Balcony



Our goal is to provide you with a renting experience that will leave you completely satisfied. Yates, Wood & MacDonald, Inc. treats you with integrity and professionalism. We strive to provide you with a living environment that is always clean and in good repair at all times. We are responsive to your needs, value you as a resident and strive to handle your maintenance requests in a timely manner. Yates, Wood & MacDonald, Inc. looks forward to helping you with all of your housing needs. Please call us for a private showing at 206-427-6535

**YATES
WOOD**

**BROKERAGE
& PROPERTY
MANAGEMENT**

**500 W Olympic Place, #305
Seattle, WA 98119**

Since 1944