

STONE WAY OFFICE SPACE AVAILABLE FOR LEASE



1231 North Allen Place , Seattle WA 98103 (Stone Way & 44th)

Available Space

- 3,270 square feet
- \$20.00/sq. ft. NNN
- 7 semi-private offices, conference room for 10, kitchen, phone room, 2 in-suite restrooms
- Ground floor access
- High ceilings
- 4 parking spaces (9-5:30 M-F) - Free

YATES
WOOD

BROKERAGE
& PROPERTY
MANAGEMENT

For more information, please contact:

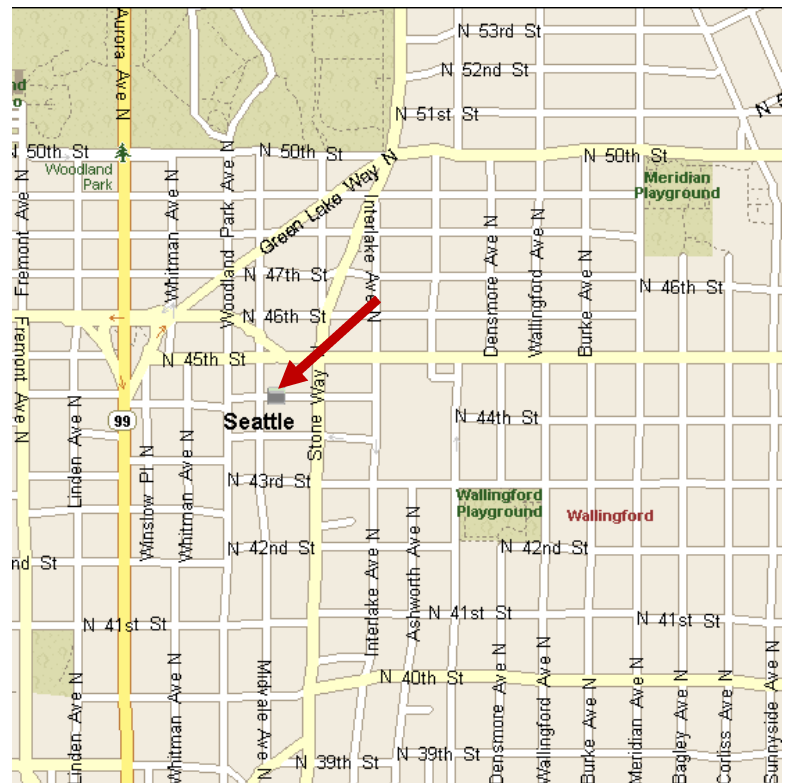
Ellen Mohl 206 268 3311
ellen@yateswood.com

Dennis Counts 206 268 3312
dcounts@yateswood.com

The information contained herein has been given to YW&M by the owners or sources that we deem reliable. We have no reason to doubt its accuracy, but we do not guarantee information contained herein.

Since 1944

Yates, Wood & MacDonald, Inc., 425 Pontius Ave N Suite 203, Seattle, WA 98109
f 206 268 3330 p 206 268 3300 www.yateswood.com

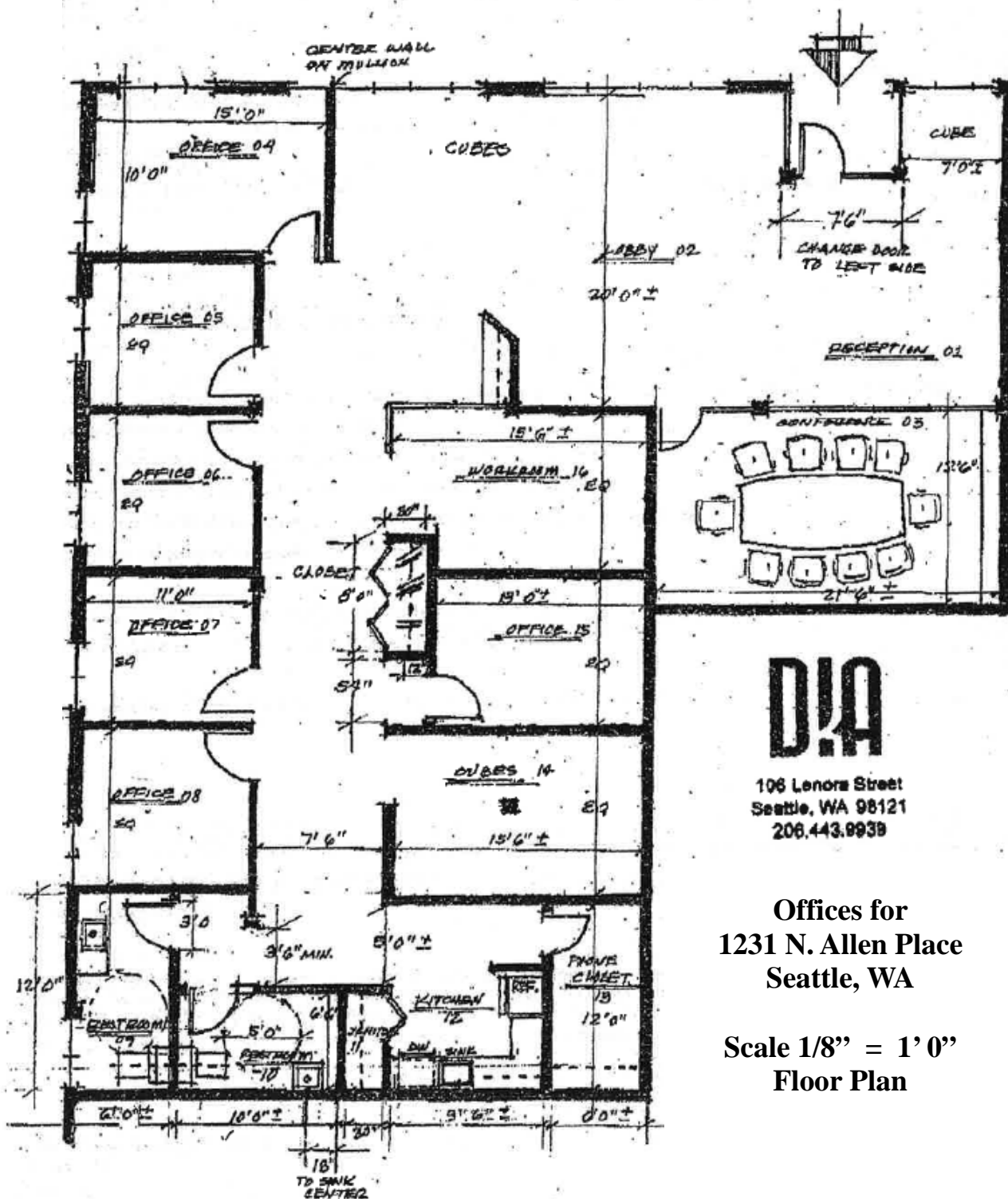


**YATES
WOOD**

**BROKERAGE
& PROPERTY
MANAGEMENT**

**1231 North Allen Place
Seattle, WA 98103**

Since 1944



DIA

106 Lenora Street
Seattle, WA 98121
206.443.8939

Offices for
1231 N. Allen Place
Seattle, WA

Scale 1/8" = 1' 0"
Floor Plan