

FOR LEASE STARBUCKS RETAIL CENTER CORNER OF 15TH AVE NE & NE 145TH



14359 15th Ave NE, Seattle WA 98125

Available Space

- 1,150 sq. ft.
- Formerly Wireless Toys
- High traffic count at the corner of NE 145th and 15th Ave NE
- 16 shared parking spaces
- Anchor tenant Starbucks with drive-thru and Subway
- Available now
- \$29.00/sq. ft./yr + NNN (\$6.60/sq. ft./yr)

YATES
WOOD

BROKERAGE
& PROPERTY
MANAGEMENT

For more information, please contact:

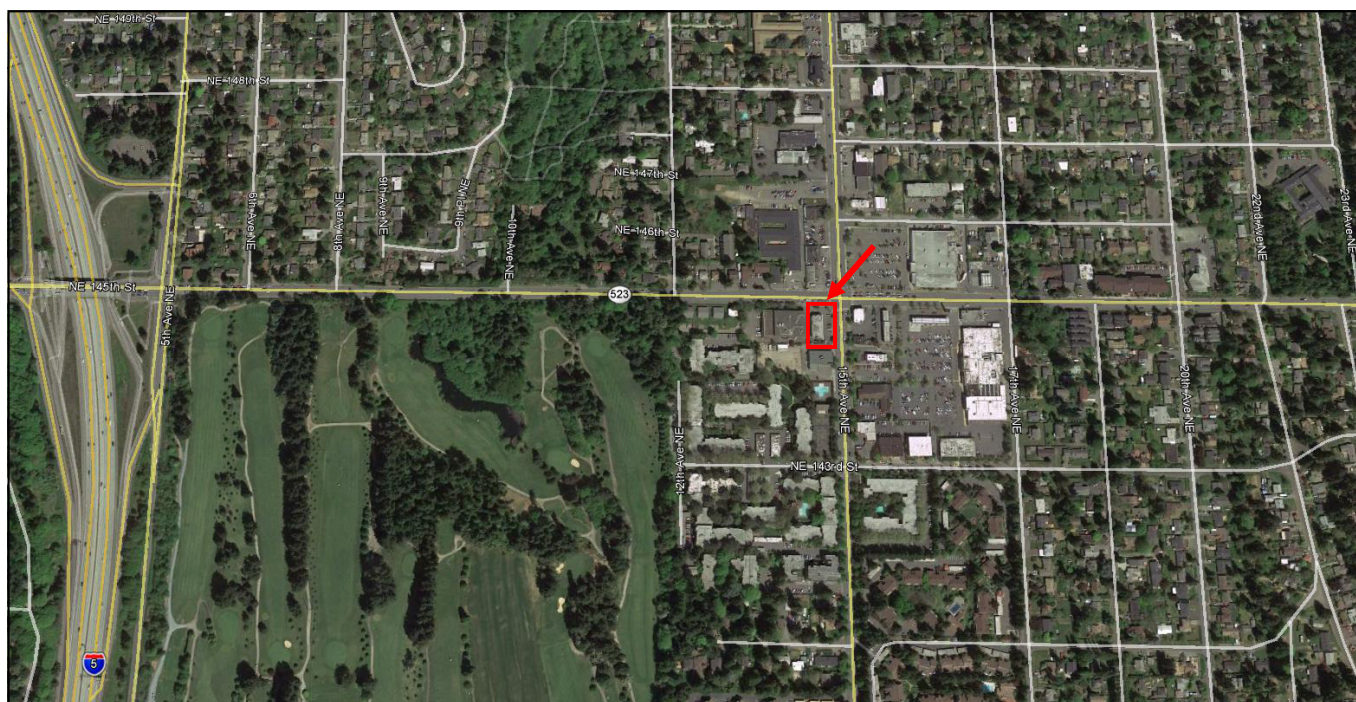
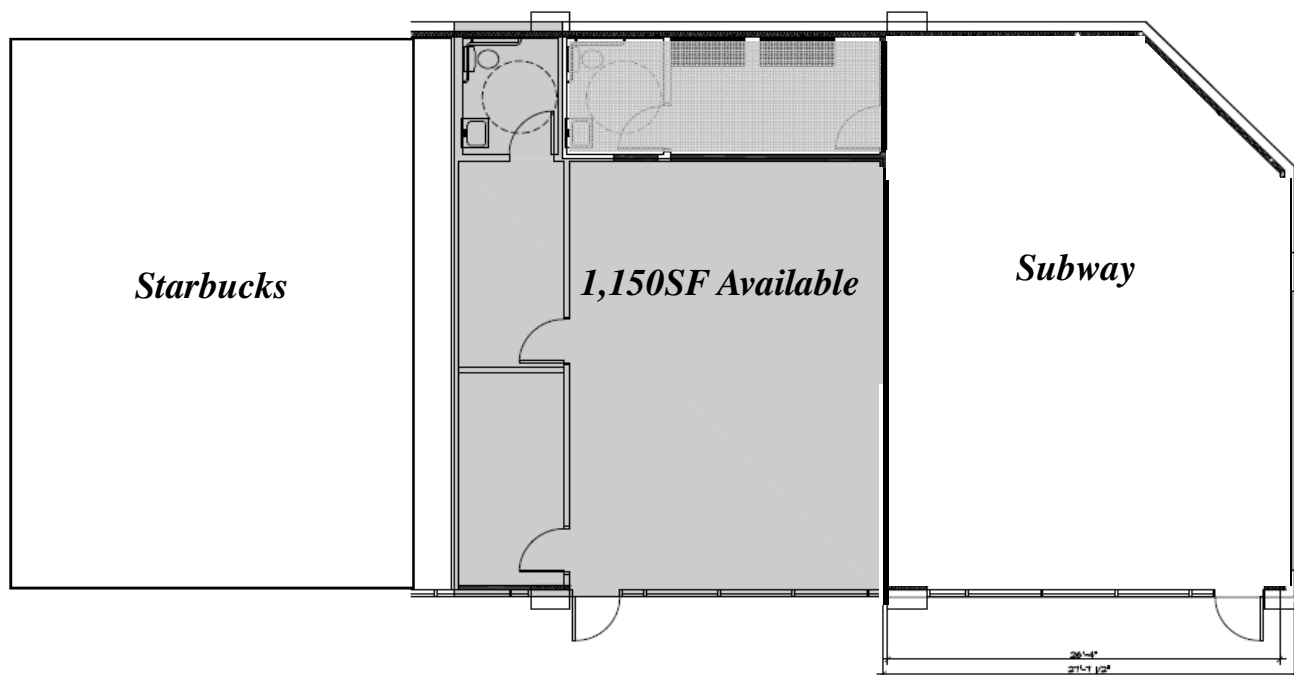
Jeremiah Roberson 206 268 3325
jeremiah@yateswood.com

Peter Argeres 206-268-3310
petera@yateswood.com

The information contained herein has been given to YW&M by the owners or sources that we deem reliable. We have no reason to doubt its accuracy, but we do not guarantee information contained herein.

Since 1944

Yates, Wood & MacDonald, Inc., 425 Pontius Ave N Suite 203, Seattle, WA 98109
f 206 268 3330 p 206 268 3300 www.yateswood.com



**YATES
WOOD**

BROKERAGE
& PROPERTY
MANAGEMENT

14359 15th Avenue NE
Seattle, WA 98125

Since 1944