

FOR SALE

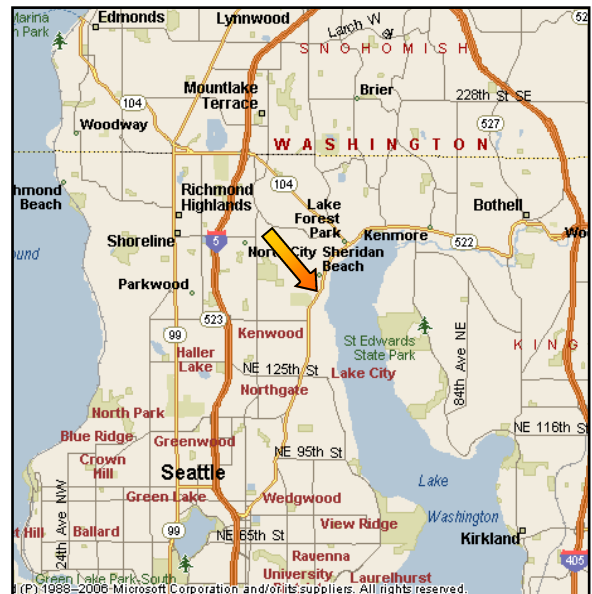
BOTHELL WAY VIEW SITE



15044 Bothell Way NE
Lake Forest Park, WA 98155

Available Space

- ◆ 50,390 SF site (KCA) zoned SGMU (LFP)
- ◆ Excellent for commercial redevelopment with a multi-tenant mixed use building
- ◆ High visibility location with Lake Washington and Cascade Mountain views
- ◆ Existing two-story 7,682 SF commercial building
- ◆ \$2,500,000



**YATES
WOOD**

**BROKERAGE
& PROPERTY
MANAGEMENT**

For more information, please contact:

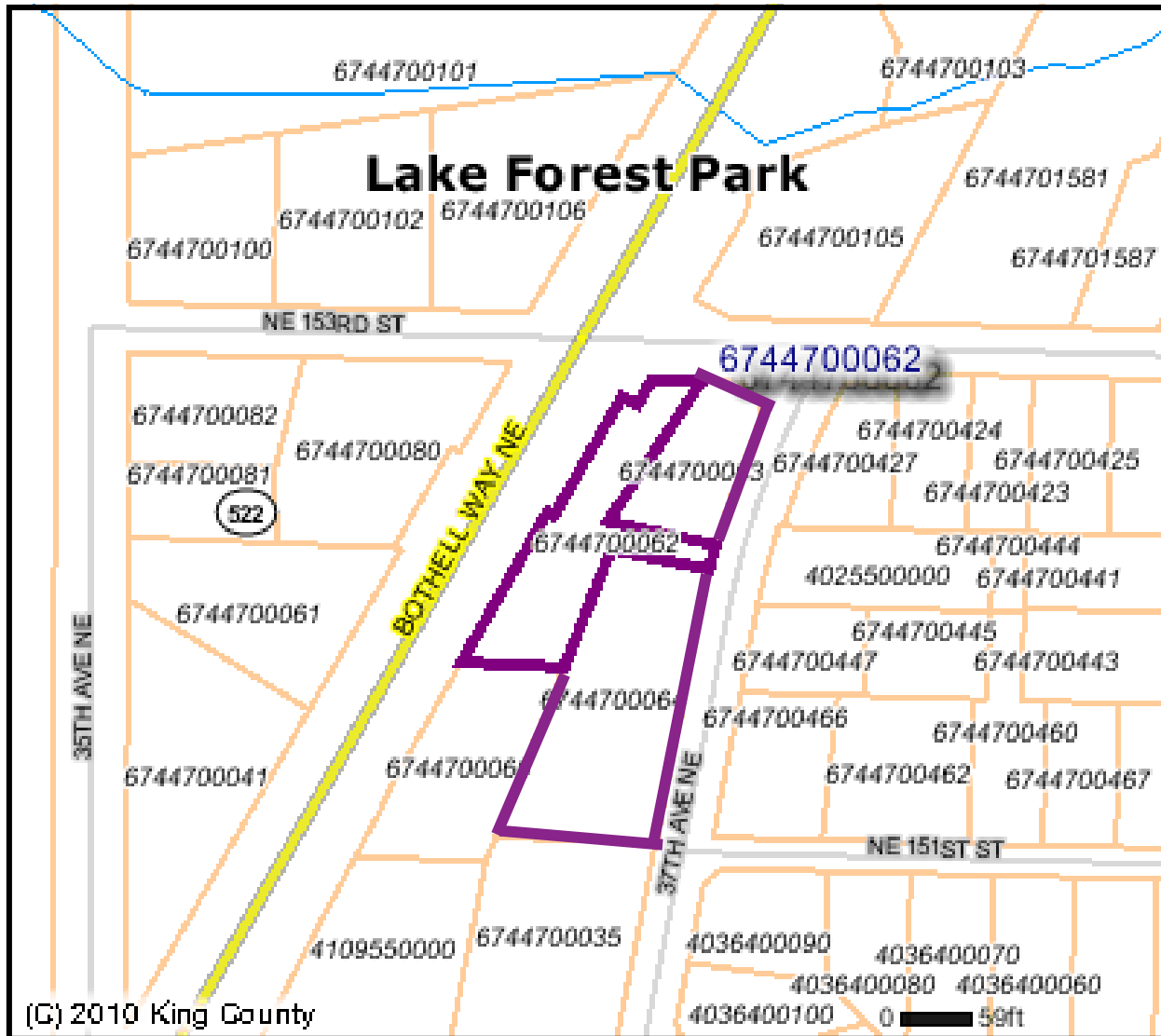
Mike McKinstry 206 268 3315
mike@yateswood.com

Charlie Heffernan 206 518 2613
cheffernan@yateswood.com

The information contained herein has been given to YW&M by the owners or sources that we deem reliable. We have no reason to doubt its accuracy, but we do not guarantee information contained herein.

Since 1944

Yates, Wood & MacDonald, Inc., 425 Pontius Ave N Suite 203, Seattle, WA 98109
f 206 268 3330 p 206 268 3300 www.yateswood.com



(G) 2010 King County

**YATES
WOOD**

**BROKERAGE
& PROPERTY
MANAGEMENT**

Site Address:

**15044 Bothell Way NE
Lake Forest Park, WA 98155**

Since 1944