

SOUTH LAKE UNION OFFICE SPACE FOR LEASE



1530 Westlake Avenue North, Seattle, WA 98109

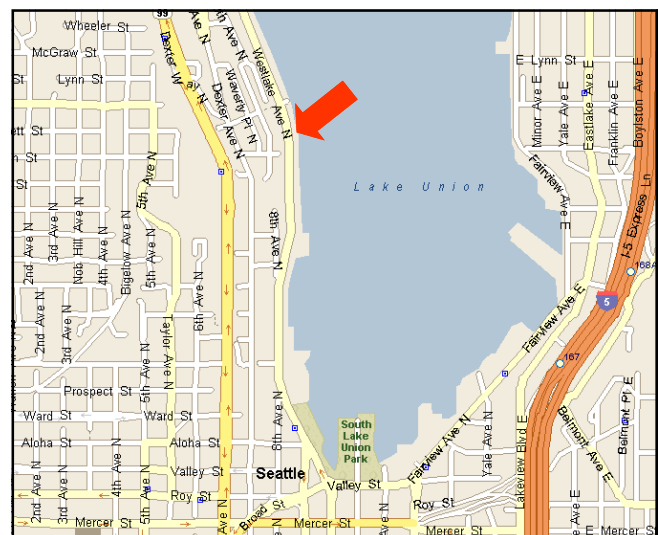
Available Space - Contiguous Spaces

Suite 600

- 1,850 sq. ft.
- \$27.00/sq. ft. Full Service
- Marina view
- Two levels

Suite 700

- 1,780 sq. ft.
- \$27.00/sq. ft. Full Service
- Marina view
- Two levels



**YATES
WOOD**

**BROKERAGE
& PROPERTY
MANAGEMENT**

For more information, please contact:

Dennis Counts 206 268 3312
dcounts@yateswood.com

Mike McKinstry 206 268 3315
mike@yateswood.com

The information contained herein has been given to YW&M by the owners or sources that we deem reliable. We have no reason to doubt its accuracy, but we do not guarantee information contained herein.

Since 1944

Yates, Wood & MacDonald, Inc., 425 Pontius Ave N Suite 203, Seattle, WA 98109
f 206 268 3330 p 206 268 3300 www.yateswood.com

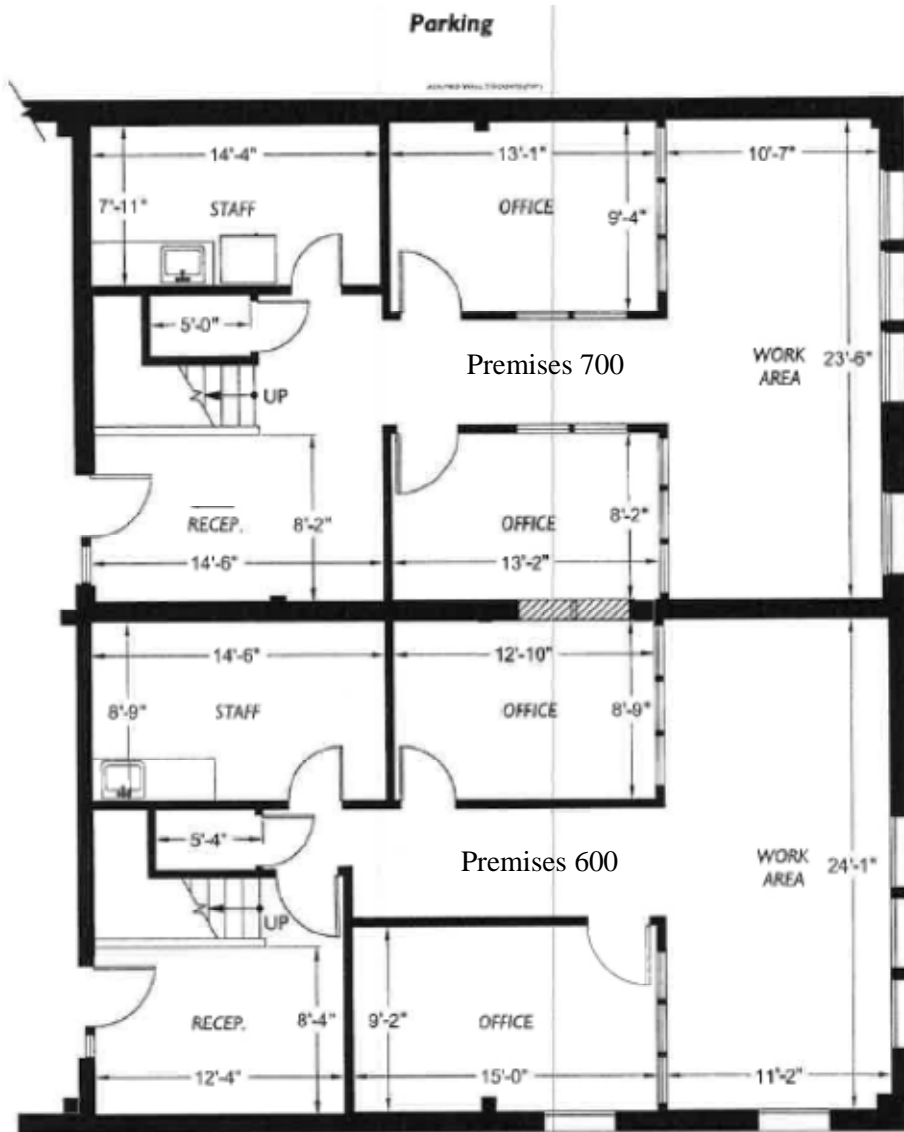


**YATES
WOOD**

**BROKERAGE
& PROPERTY
MANAGEMENT**

**1530 Westlake Avenue North
Seattle, WA 98109**

Since 1944



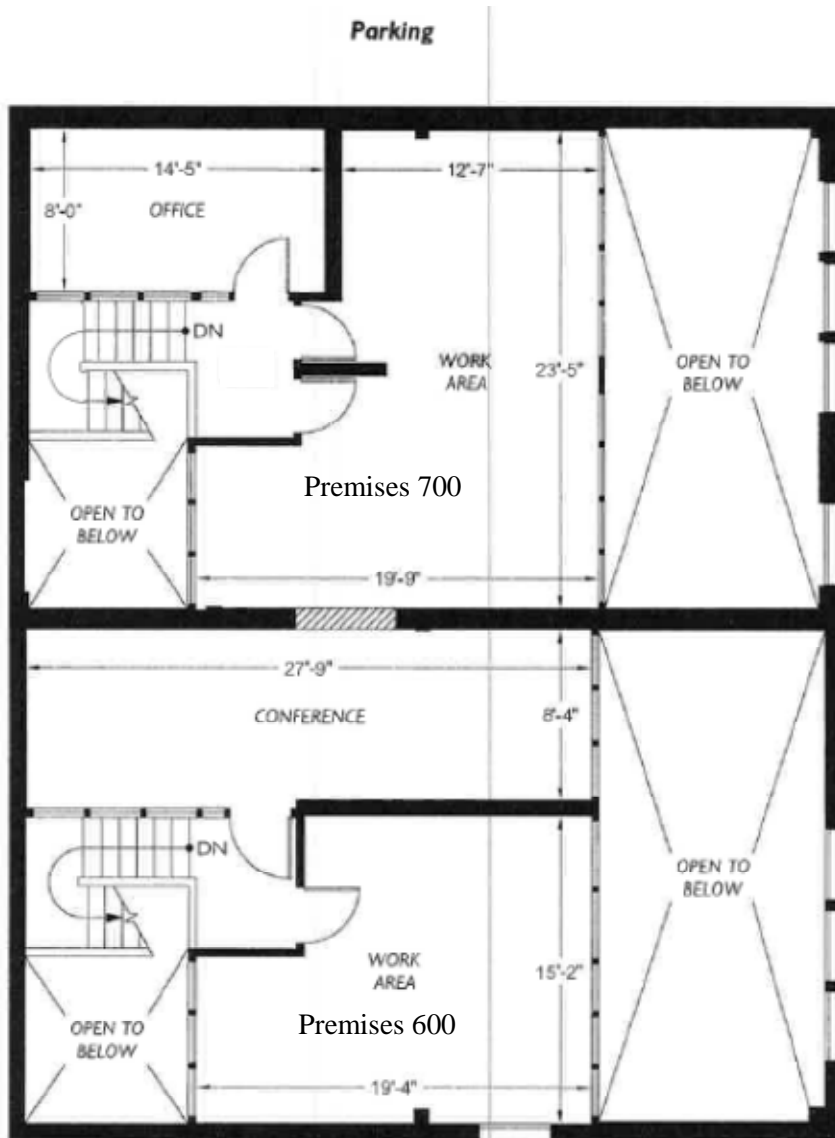
Office Building 1530 Westlake Avenue North Seattle, WA 98109	Floor Plan		2-D AS-BUILT FLOOR PLANS	2DFLOORPLANS.COM 206-328-7410 fax 206-328-4764 1700 21st Avenue South Suite 100 Seattle, WA 98144
	Floor			
Subject	Floor	Scale	Measured: January 2014	Project: C14-108

**YATES
WOOD**

**BROKERAGE
& PROPERTY
MANAGEMENT**

**1530 Westlake Avenue North
Seattle, WA 98109**

Since 1944



Office Building 1530 Westlake Avenue North Seattle, WA 98109	Floor Plan MEZZ	0 10 	2-D AS-BUILT FLOOR PLANS 2DFLOORPLANS.COM 206-328-7410 fax 206-328-4764 1700 21st Avenue South Suite 100 Seattle, WA 98144
Subject	Floor	Scale	<div style="display: flex; justify-content: space-between;"> Measured: January 2014 Project: C14-108 </div>

**YATES
WOOD**

**BROKERAGE
& PROPERTY
MANAGEMENT**

**1530 Westlake Avenue North
Seattle, WA 98109**

Since 1944