

BELLEVUE CONDOMINIUM FOR RENT

2 BEDROOM & 2.5 BATHROOM UNIT



2060 132nd Ave SE #G604, Bellevue WA 98006

Available

- 2 Bedrooms & 2.5 Bathrooms with attached one car garage and space for second car outside garage
- Unit Size - 1,192 sq. ft.
- Rent - \$2,300/month plus \$1,000 Security Deposit; water/sewer included in rent
- Cat allowed with \$400 deposit; small to medium dog with \$400 deposit, depending on size
- No smoking

Description

The condominium complex, One Central Park is conveniently located off Richards Road, near Factoria Mall and I-90. This quiet townhome is tucked away in the back overlooking the Greenbelt and Nature Preserve. Enjoy the quiet beauty on your spacious deck. Inside, the unit has a maple floor entry and wall-to-wall carpets throughout. The large master suite has an oversized dual-head shower and the second bedroom has a small walk-in closet and use of the large full bathroom. The kitchen is equipped with a garbage disposal and a refrigerator that has a water dispenser. A washer and dryer are included in the unit.

YATES
WOOD

BROKERAGE
& PROPERTY
MANAGEMENT

For more information, please contact:

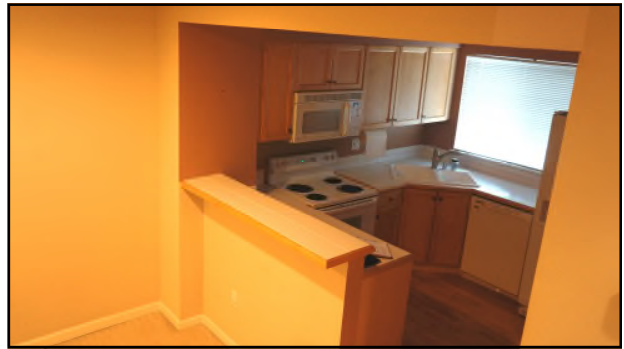
Seth Carlson 206 304 4058
seth@yateswood.com

The information contained herein has been given to YW&M by the owners or sources that we deem reliable. We have no reason to doubt its accuracy, but we do not guarantee information contained herein.

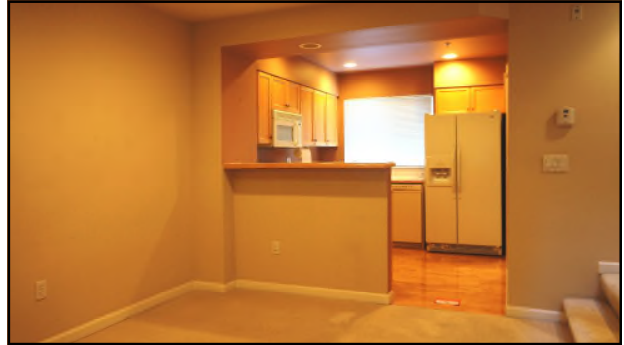
Since 1944

Yates, Wood & MacDonald, Inc., 425 Pontius Ave N Suite 203, Seattle, WA 98109
f 206 268 3330 p 206 268 3300 www.yateswood.com

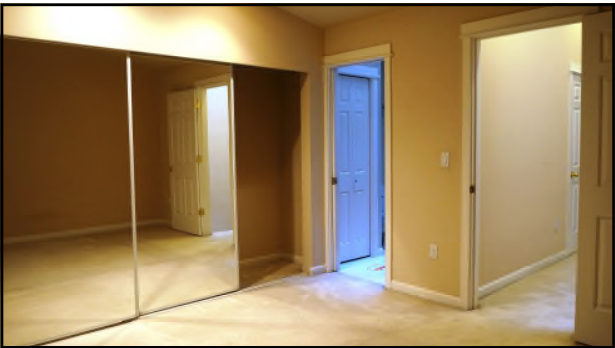
2 Bedroom & 2.5 Bathroom Condominium Unit



Kitchen Views



Living/Dining Area



Master Bedroom



Master Bathroom

Our goal is to provide you with a renting experience that will leave you completely satisfied. Yates, Wood & MacDonald, Inc. treats you with integrity and professionalism. We strive to provide you with a living environment that is always clean and in good repair at all times. We are responsive to your needs, value you as a resident and strive to handle your maintenance requests in a timely manner. Yates, Wood & MacDonald, Inc. looks forward to helping you with all of your housing needs.

**YATES
WOOD**

**BROKERAGE
& PROPERTY
MANAGEMENT**

**2060 132nd Ave SE #G604
Bellevue, WA 98006**

Since 1944