

BELLTOWN RETAIL & CAFÉ OPPORTUNITY FOR LEASE



2323 First Avenue, Seattle WA 98121

Available Space

- Space consists of 3,395 sq ft
- Formerly “Ventana” with a built-out circular bar and newer high-end bathroom
- \$21.00/sq ft/yr + NNN (\$6.00/sq ft/yr)

Special Features

- Located in the heart of Belltown on First Avenue
- Stunning space with tons of windows in a triangular shape make this very attractive
- Space has view of Puget Sound and Olympic Mountains

**YATES
WOOD**

**BROKERAGE
& PROPERTY
MANAGEMENT**

For more information, please contact:

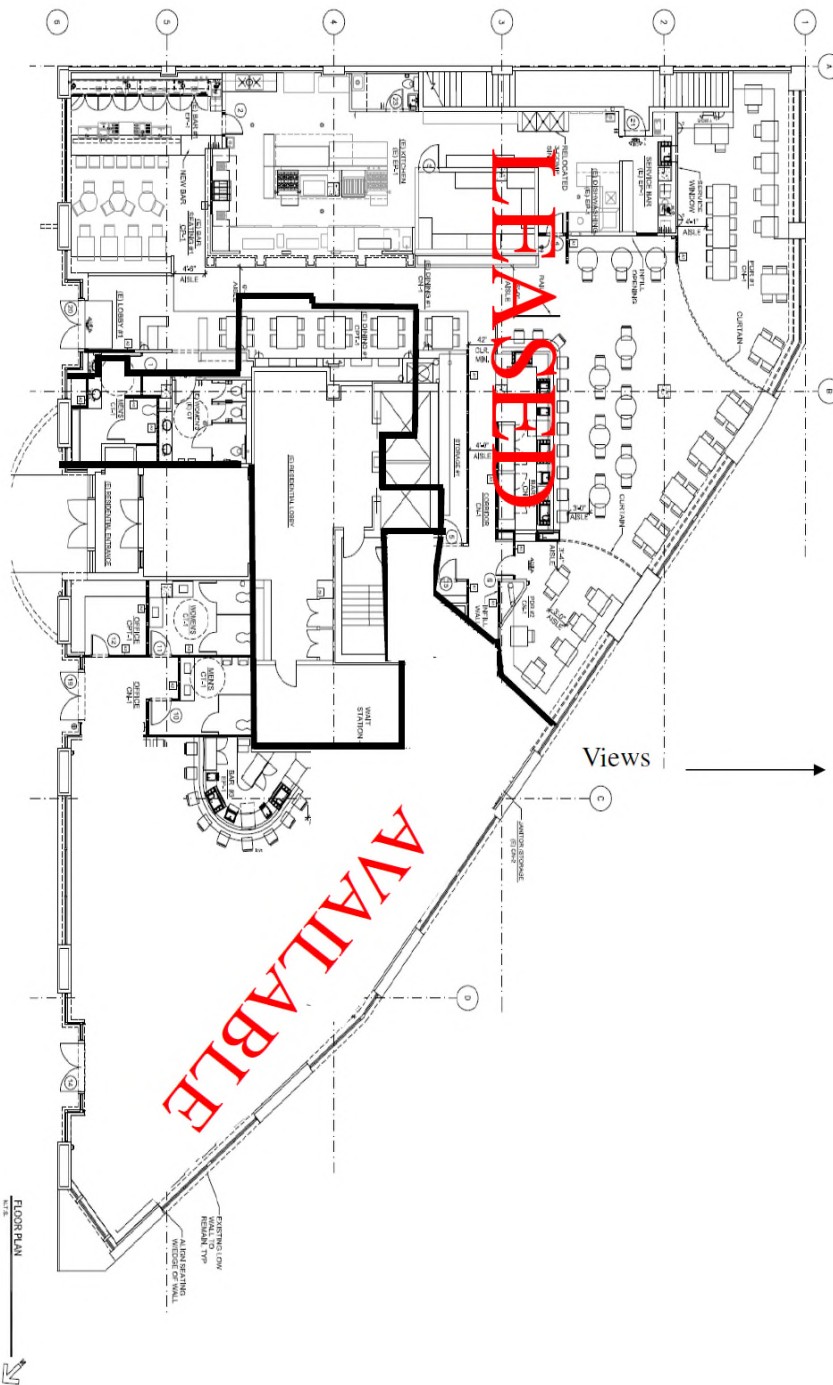
Jeremiah Roberson 206 268 3325
jeremiah@yateswood.com

Peter Argeres 206 268 3310
petera@yateswood.com

The information contained herein has been given to YW&M by the owners or sources that we deem reliable. We have no reason to doubt its accuracy, but we do not guarantee information contained herein.

Since 1944

Yates, Wood & MacDonald, Inc., 425 Pontius Ave N Suite 203, Seattle, WA 98109
f 206 268 3330 p 206 268 3300 www.yateswood.com



**YATES
WOOD**

**BROKERAGE
& PROPERTY
MANAGEMENT**

**2323 First Avenue
Seattle, WA 98121**

The information contained herein has been given to YW&M by the owners or sources that we deem reliable. We have no reason to doubt its accuracy, but we do not guarantee information contained herein.

Since 1944

Yates, Wood & MacDonald, Inc., 425 Pontius Ave N Suite 203, Seattle, WA 98109
f 206 268 3330 p 206 268 3300 www.yateswood.com