

U-VILLAGE AREA OFFICE SPACE FOR LEASE



2817 NE 55th Street, Seattle, WA 98105

Available Space—Available Now

- Stand alone office building with five off-street free parking spaces and pole signage
- Built-out as a chiropractor office but good for many office uses
- 2,000 sf total, divisible - \$2,500/mo plus utilities for total building
 - Suite A - \$700/mo plus utilities
 - Suite B - \$900/mo plus utilities
 - Suite A & B Combined - \$1,400/mo plus utilities
 - Suite C - \$700/mo plus utilities
 - Suite D - \$700/mo plus utilities
 - Suite C & D Combined - \$1,200/mo plus utilities
- Great location near U-Village and next to the Duchess Tavern with good street parking, two year minimum lease.



YATES
WOOD

**BROKERAGE
& PROPERTY
MANAGEMENT**

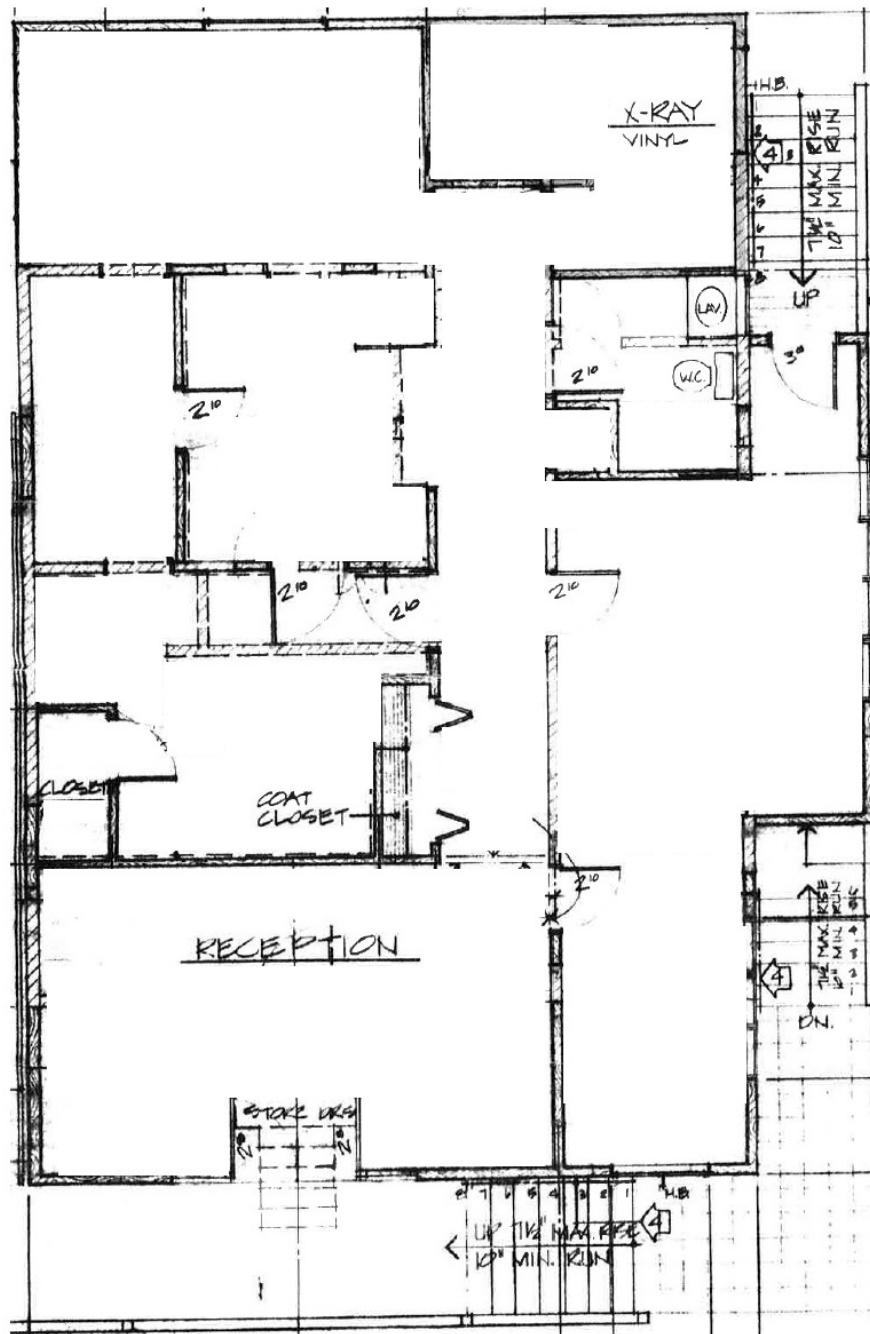
For more information, please contact:

Peter Argeres 206 268 3310
petera@yateswood.com

The information contained herein has been given to YW&M by the owners or sources that we deem reliable. We have no reason to doubt its accuracy, but we do not guarantee information contained herein.

Since 1944

Yates, Wood & MacDonald, Inc., 425 Pontius Ave N Suite 203, Seattle, WA 98109
f 206 268 3330 p 206 268 3300 www.yateswood.com



PARKING LOT

NE 55th Street

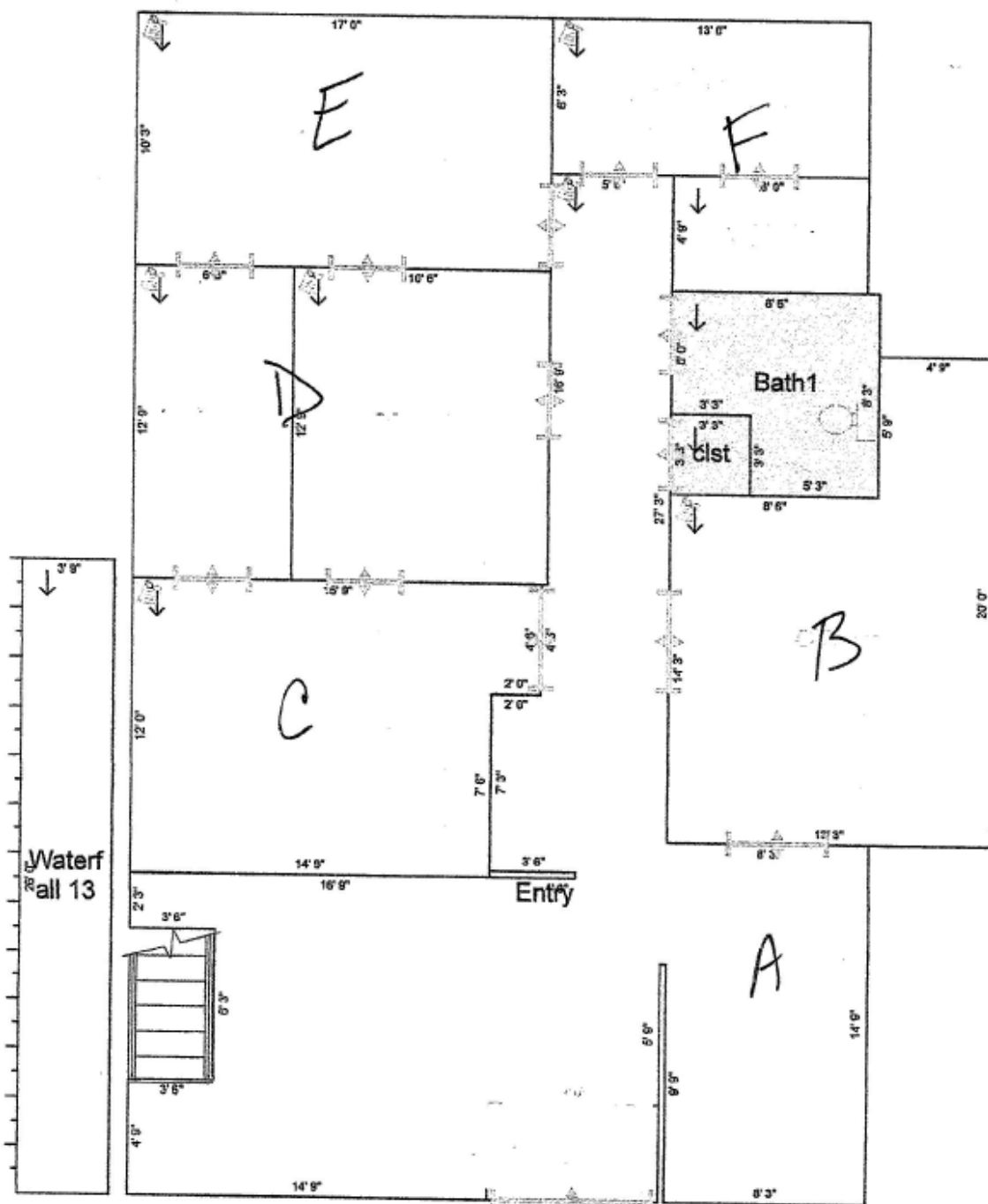
**YATES
WOOD**

BROKERAGE
& PROPERTY
MANAGEMENT

2817 NE 55th Street
Seattle, WA 98105

Since 1944

Upstairs Floor Plan



YATES
WOOD

**BROKERAGE
& PROPERTY
MANAGEMENT**

**2817 NE 55th Street
Seattle, WA 98105**

Since 1944