

# STONE WAY BASEMENT RETAIL SPACE FOR LEASE



4415 Stone Way Ave N, Seattle WA 98103

## Available Space

- Approximately 3,000 sq. ft.
- \$14.00/sq ft NNN
- Daylight basement - sprinklered
- High ceilings, open layout
- 2 restrooms
- Available February 1, 2016

YATES  
WOOD

BROKERAGE  
& PROPERTY  
MANAGEMENT

For more information, please contact:

Ellen Mohl 206 268 3311  
[ellenmohl@yateswood.com](mailto:ellenmohl@yateswood.com)

Dennis Counts 206 268 3312  
[dcounts@yateswood.com](mailto:dcounts@yateswood.com)

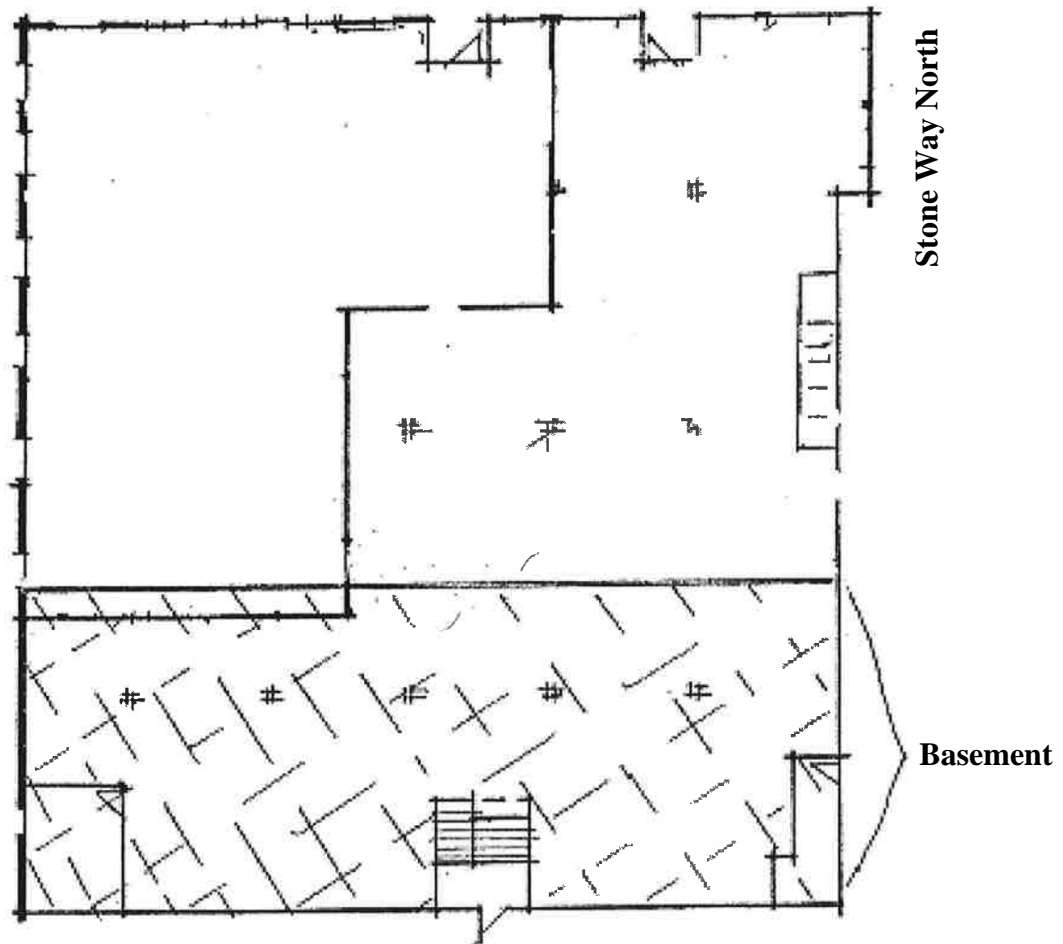
The information contained herein has been given to YW&M by the owners or sources that we deem reliable. We have no reason to doubt its accuracy, but we do not guarantee information contained herein.

*Since 1944*

Yates, Wood & MacDonald, Inc., 425 Pontius Ave N Suite 203, Seattle, WA 98109  
f 206 268 3330 p 206 268 3300 [www.yateswood.com](http://www.yateswood.com)

DESCRIPTION OF THE PREMISES

North Allen Place



**YATES  
WOOD**

**BROKERAGE  
& PROPERTY  
MANAGEMENT**

**4415 Stone Way Ave N  
Seattle, WA 98103**

*Since 1944*