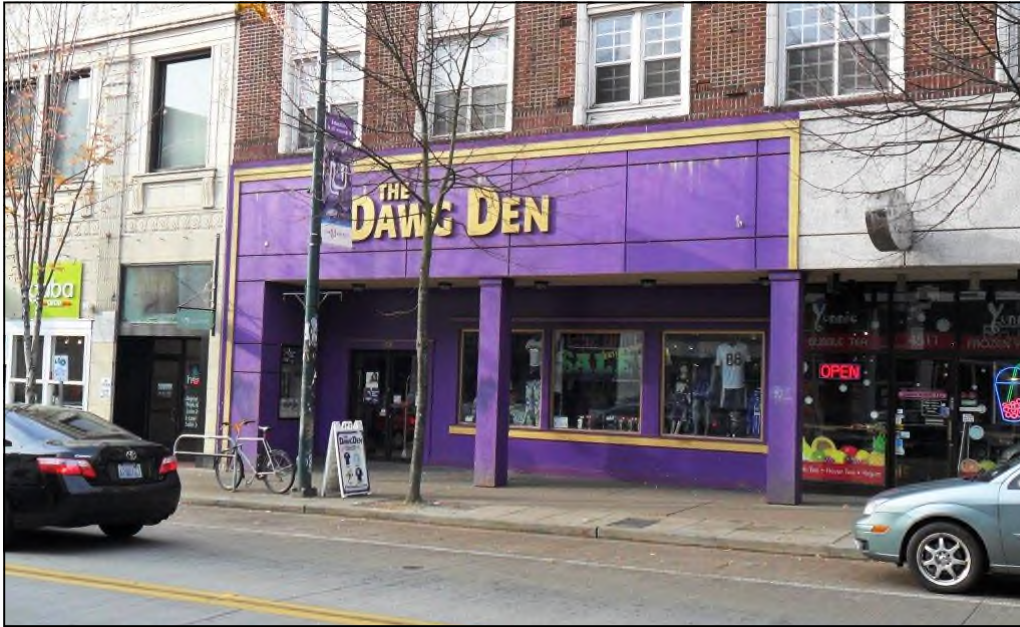


CORE UNIVERSITY WAY RETAIL SPACE FOR LEASE



4509 University Way NE, Seattle 98105

Description:

- 3,500 SF Street Level
- Plus Full Basement (free)
- Plus Mezzanine Office (free)
- \$24.00/SF/yr. + NNN
- Modern upgrades

**YATES
WOOD**

**BROKERAGE
& PROPERTY
MANAGEMENT**

For more information, please contact:

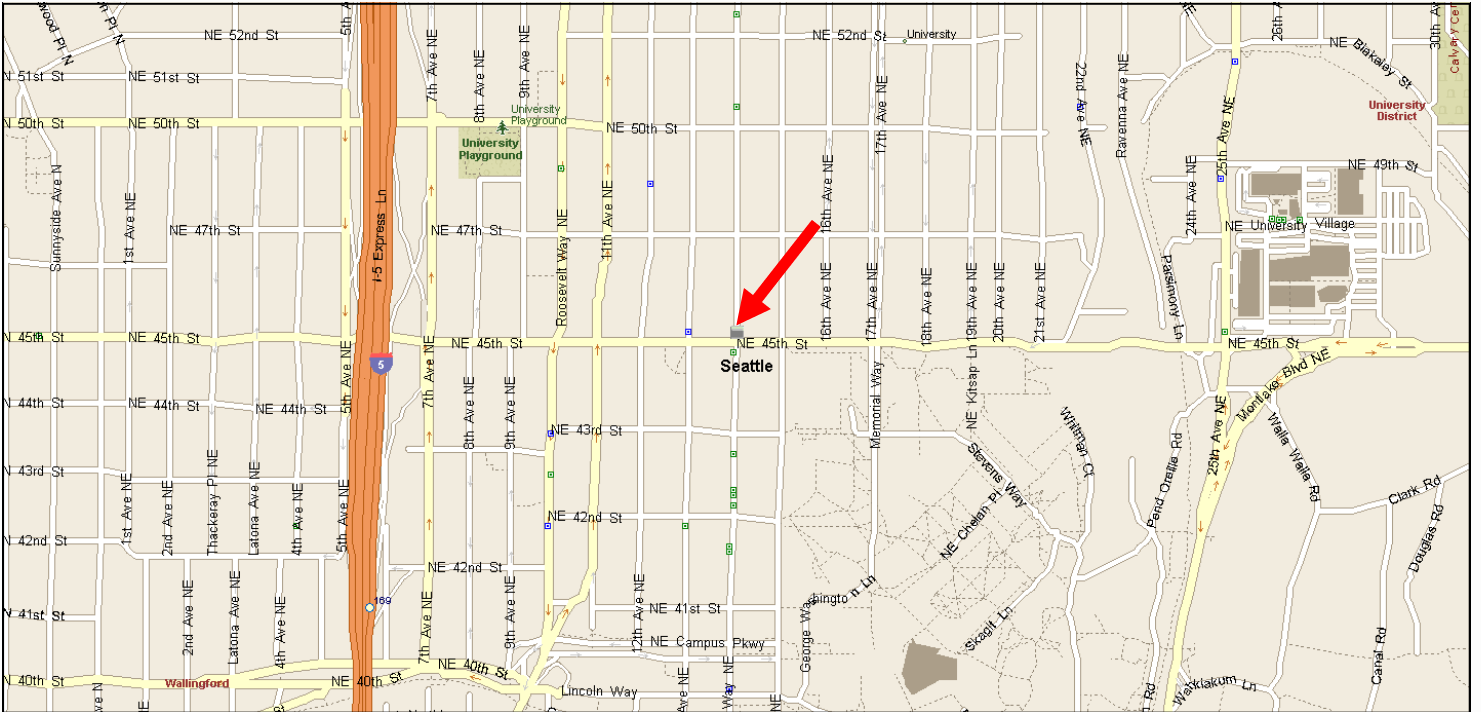
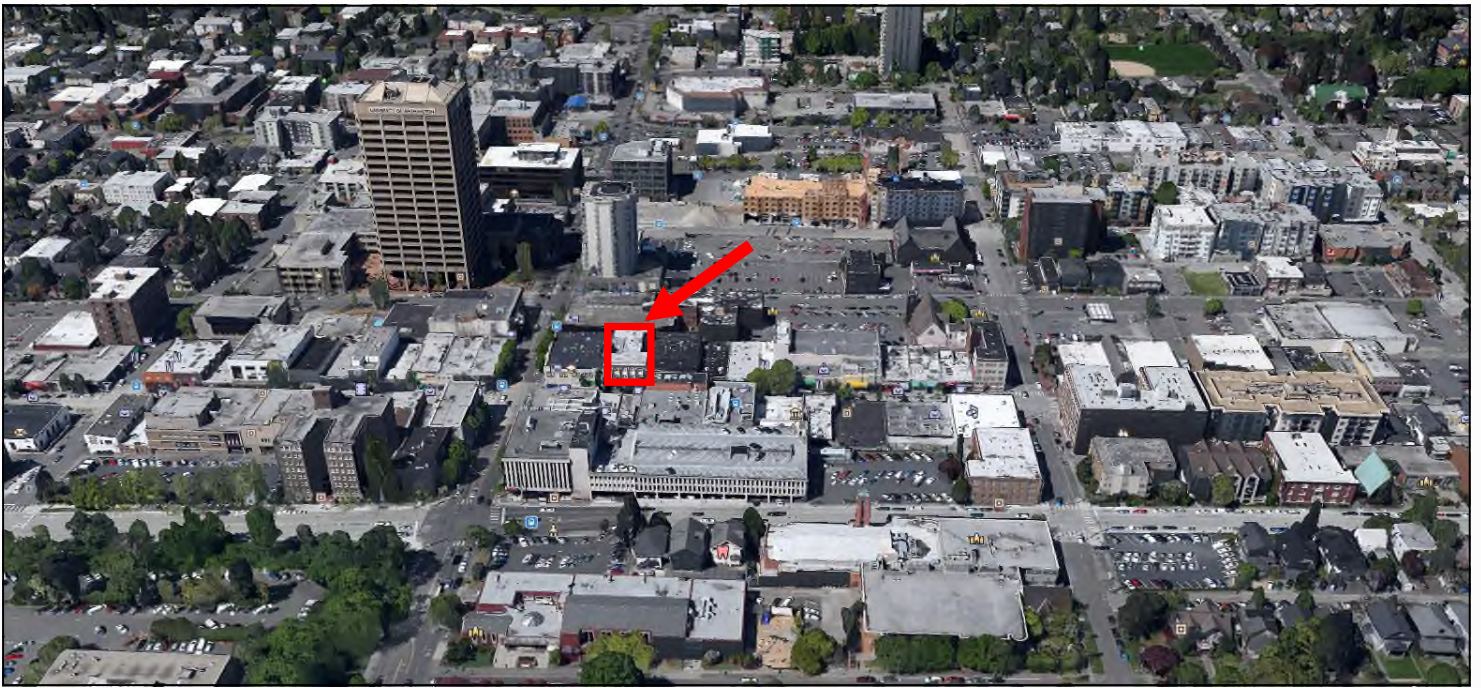
Ellen Mohl 206 268 3311
ellenmohl@yateswood.com

Dennis Counts 206 268 3312
dcounts@yateswood.com

The information contained herein has been given to YW&M by the owners or sources that we deem reliable. We have no reason to doubt its accuracy, but we do not guarantee information contained herein.

Since 1944

Yates, Wood & MacDonald, Inc., 425 Pontius Ave N Suite 203, Seattle, WA 98109
f 206 268 3330 p 206 268 3300 www.yateswood.com



YATES
WOOD

BROKERAGE
& PROPERTY
MANAGEMENT

4509 University Way NE
Seattle WA 98105

Since 1944