

# SOUTH SEATTLE/GEORGETOWN OFFICE SPACE FOR LEASE



5030 1st Avenue South, Suite 300 , Seattle, WA 98134

## Available Space

- 4,840 RSF (full floor) penthouse office
- Convenient location
- Mt. Rainier and Seattle skyline views
- High ceilings and quality finishes
- Parking included
- Shared roof top deck
- \$24.00 fully serviced

**YATES  
WOOD**

**BROKERAGE  
& PROPERTY  
MANAGEMENT**

For more information, please contact:

Mark Alfieri 425 985 8542  
markalfieri@yateswood.com

Peter Argeres 206 268 3310  
petera@yateswood.com

The information contained herein has been given to YW&M by the owners or sources that we deem reliable. We have no reason to doubt its accuracy, but we do not guarantee information contained herein.

*Since 1944*

Yates, Wood & MacDonald, Inc., 425 Pontius Ave N Suite 203, Seattle, WA 98109  
f 206 268 3330 p 206 268 3300 [www.yateswood.com](http://www.yateswood.com)



# SOUTH SEATTLE/GEORGETOWN OFFICE SPACE AERIAL MAP



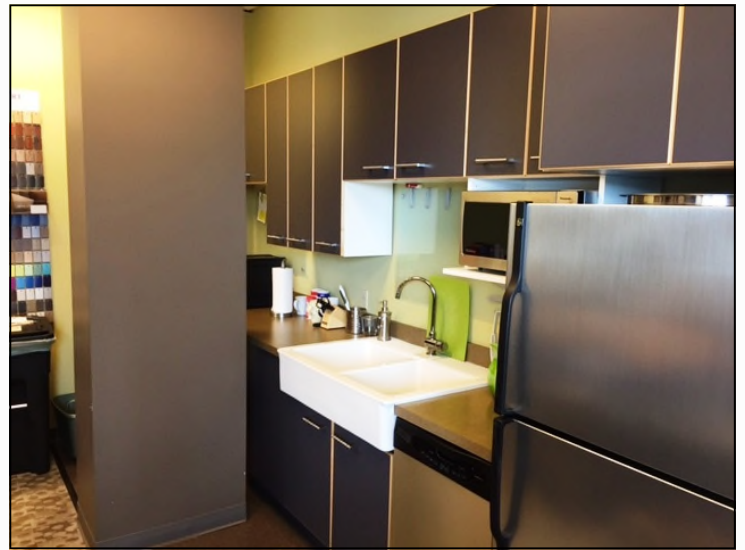
**YATES  
WOOD**

BROKERAGE  
& PROPERTY  
MANAGEMENT

5030 1st Avenue S, Suite 300  
Seattle, WA 98134

*Since 1944*





**YATES  
WOOD**

BROKERAGE  
& PROPERTY  
MANAGEMENT

5030 1st Avenue S, Suite 300  
Seattle, WA 98134

*Since 1944*

[illegible]

*Since 1944*