

BALLARD OFFICE SPACE FOR LEASE



View from office window

5305 Shilshole Ave NW, Suite 150, Seattle WA 98107

- **2,619 RSF (2,593 USF)**
- **\$21.00/sf/year gross (no janitorial)**
- **High ceilings and open floor plan**
- **Terrific water view**
- **6 free parking spaces**
- **Private restrooms**
- **Green air handling**

**YATES
WOOD**

**BROKERAGE
& PROPERTY
MANAGEMENT**

For more information, please contact:

Dennis Counts 206 268 3312
dcounts@yateswood.com

Ellen Mohl 206 268 3311
ellenmohl@yateswood.com

Mark Alfieri 425-985-8542
markalfieri@yateswood.com

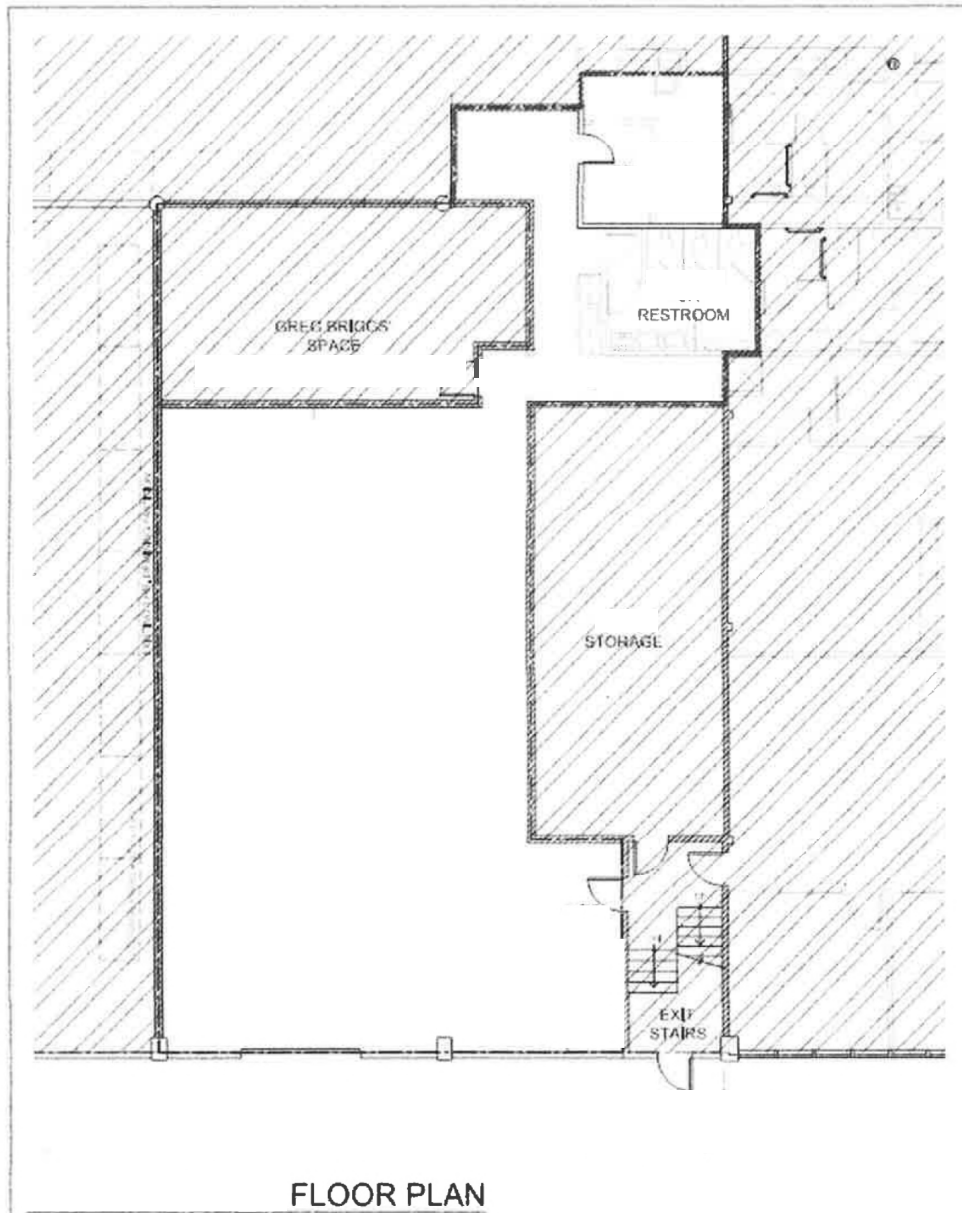
The information contained herein has been given to YW&M by the owners or sources that we deem reliable. We have no reason to doubt its accuracy, but we do not guarantee information contained herein.

Since 1944

Yates, Wood & MacDonald, Inc., 425 Pontius Ave N Suite 203, Seattle, WA 98109
f 206 268 3330 p 206 268 3300 www.yateswood.com

EXHIBIT B

DEPICTION OF NEW PREMISES



**YATES
WOOD**

**BROKERAGE
& PROPERTY
MANAGEMENT**

**5305 Shilshole Avenue NW
Seattle, WA 98107**

Since 1944



**YATES
WOOD**

**BROKERAGE
& PROPERTY
MANAGEMENT**

**5305 Shilshole Avenue NW
Seattle, WA 98107**

Since 1944