

SHORELINE TOWNHOME FOR RENT

2 BEDROOMS & 1.5 BATHROOMS



834 North 145th Lane, Shoreline WA 98133

Available

- 2 Bedrooms & 1.5 Bathrooms in 1,230 sq. ft. house
- Rent - \$1,900/month
- Security Deposit - \$1,000 plus first and last month's rent
- No pets allowed

Description

Contemporary two-story townhome located on interurban trail just north of the Seattle city line. The townhome features vaulted ceilings, an open kitchen concept with stainless steel appliances, gas stove and fireplace, and both a private patio and community garden. Enjoy close proximity to Central Market, Shoreline Community College and North Seattle Community College. Easy commute to Seattle via Aurora Ave N, I-5 and rapid transit along Aurora. Tenant is responsible for all utilities. Garage space used as a karate studio 3-4 times per week by landlord. Landlord will respect privacy of tenants and not access their space.

**YATES
WOOD**

**BROKERAGE
& PROPERTY
MANAGEMENT**

For more information, please contact:

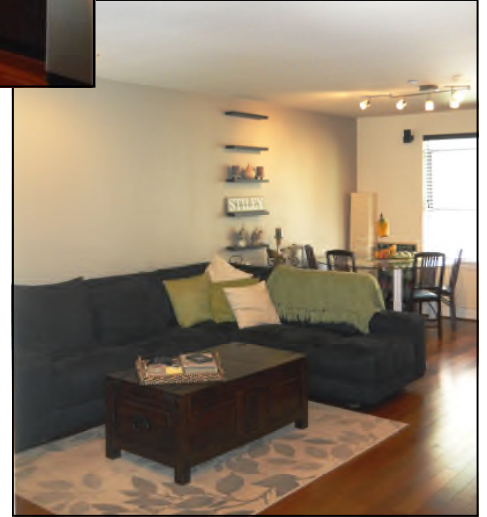
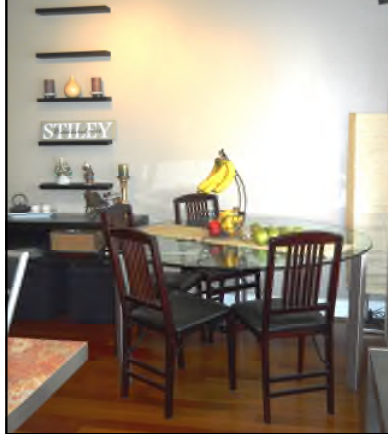
**Seth Carlson 206 304 4058
seth@yateswood.com**

The information contained herein has been given to YW&M by the owners or sources that we deem reliable. We have no reason to doubt its accuracy, but we do not guarantee information contained herein.

Since 1944

Yates, Wood & MacDonald, Inc., 425 Pontius Ave N Suite 203, Seattle, WA 98109
f 206 268 3330 p 206 268 3300 www.yateswood.com

SHORELINE 2 BEDROOM & 1.5 BATHROOM TOWNHOME



Our goal is to provide you with a renting experience that will leave you completely satisfied and happy. Yates, Wood & MacDonald, Inc. treats you with integrity and professionalism. We strive to provide you with a living environment that is always clean and in good repair at all times. We are responsive to your needs, value you as a resident and strive to handle your maintenance requests in a timely manner. Yates, Wood & MacDonald, Inc. looks forward to helping you with all of your housing needs.

**YATES
WOOD**

**BROKERAGE
& PROPERTY
MANAGEMENT**

**834 North 145th Lane
Shoreline, WA 98133**

Since 1944