

JACK STRAW OFFICE SPACE FOR LEASE

UNIVERSITY DISTRICT



909 NE 43rd Street, Seattle WA 98105

Available Space

- Suite 208 - 664 sq. ft.
- \$23.00/sq. ft. full service

Features

- Proximity to the UW
- Adjacent to UW Medical Center at Roosevelt
- On major bus routes

YATES
WOOD

BROKERAGE
& PROPERTY
MANAGEMENT

For more information, please contact:

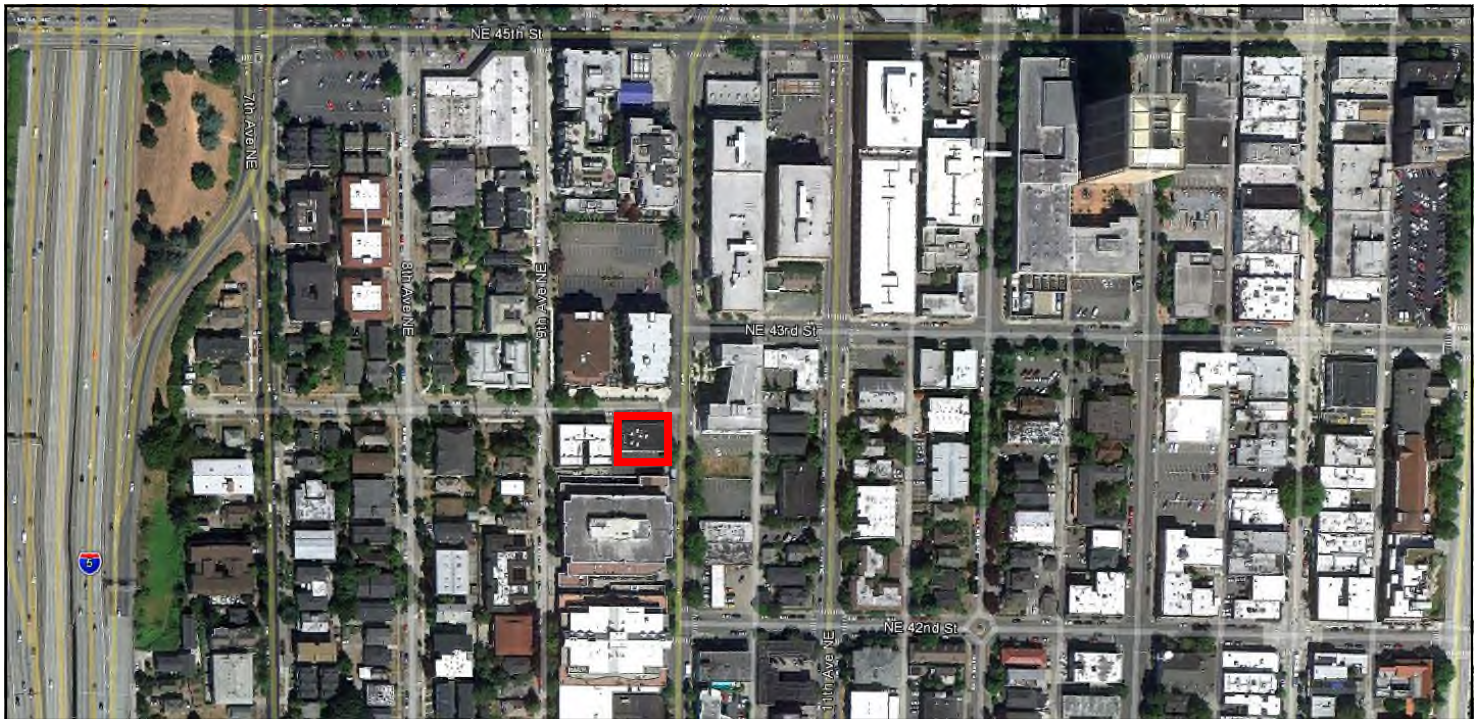
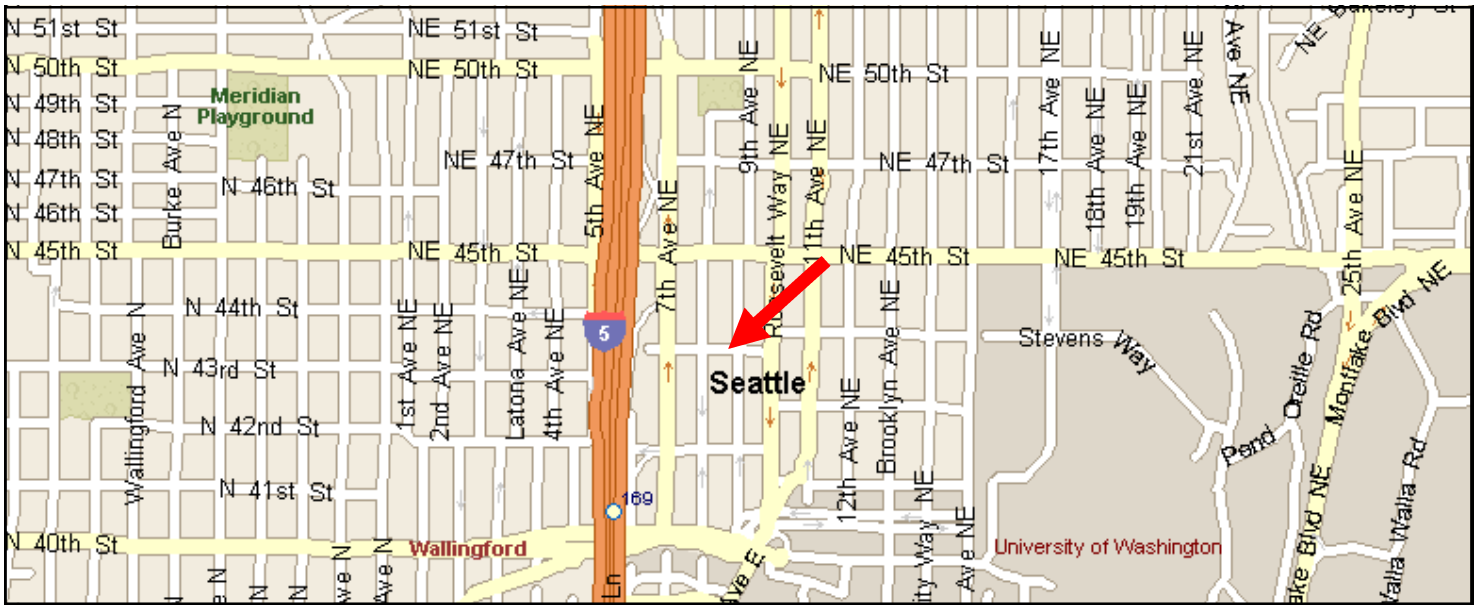
Dennis Counts 206 268 3312
dcounts@yateswood.com

Wayne Wenzel 206 268 3313
wwenzel@yateswood.com

The information contained herein has been given to YW&M by the owners or sources that we deem reliable. We have no reason to doubt its accuracy, but we do not guarantee information contained herein.

Since 1944

Yates, Wood & MacDonald, Inc., 425 Pontius Ave N Suite 203, Seattle, WA 98109
f 206 268 3330 p 206 268 3300 www.yateswood.com



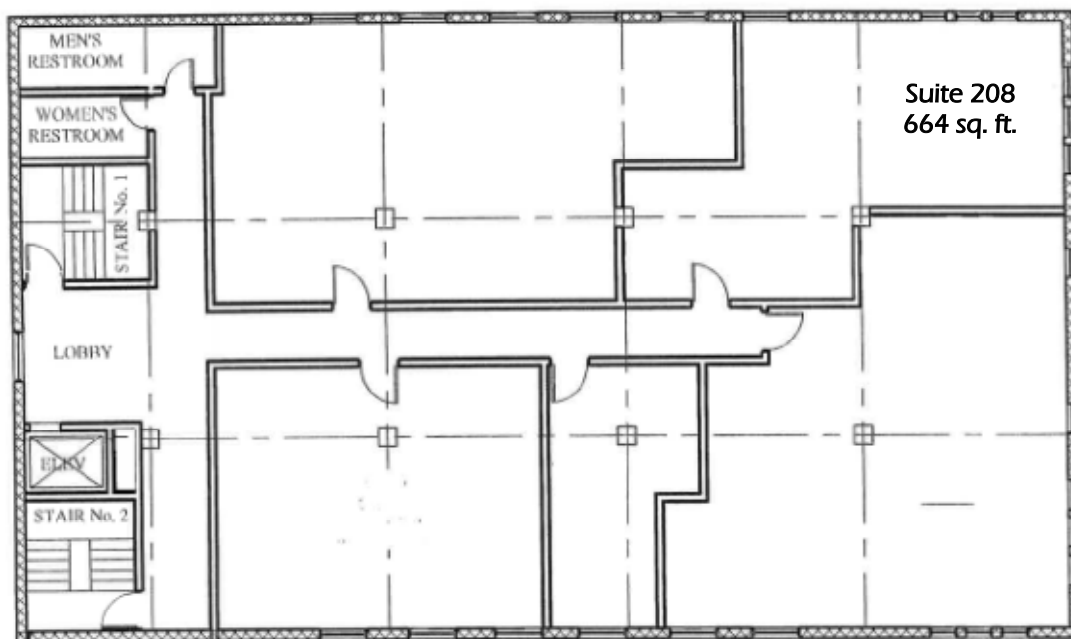
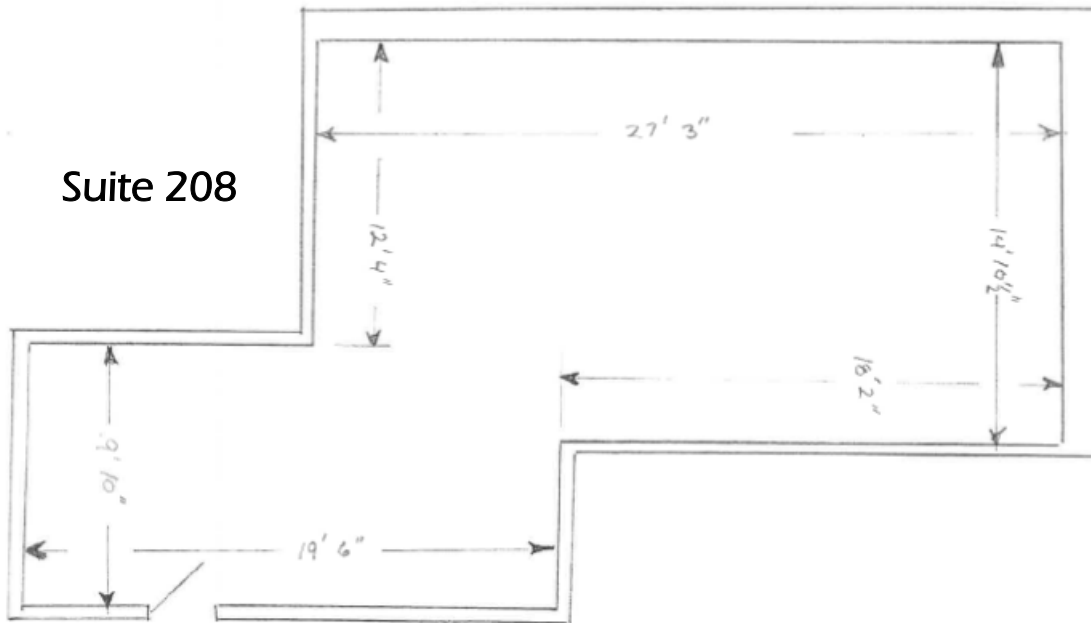
**YATES
WOOD**

**BROKERAGE
& PROPERTY
MANAGEMENT**

**909 NE 43rd Street
Seattle, WA 98105**

Since 1944

Suite 208



**YATES
WOOD**

**BROKERAGE
& PROPERTY
MANAGEMENT**

**909 NE 43rd Street
Seattle, WA 98105**

Since 1944