

SAMMAMISH CONDOMINIUM FOR RENT

3 BEDROOMS & 2 BATHROOMS



911 232th Lane NE #911, Sammamish WA 98074

Available

- 3 Bedrooms & 2 Bathrooms
- 1 year lease at \$2,100/month; last month rent and security deposit of \$1,000 required
- No pets allowed

Description - Cheswick Lane Townhouse

Located in the Cheswick Lane Townhouse complex on the Sammamish Plateau, this unit is conveniently located off the main entry to the complex. Walk through the front door to stunning vaulted ceilings and a new upscale interior with designer colors. The unit's open floor plan has generous spaces and a gorgeous open kitchen with granite countertops. A private patio is the excellent place to enjoy a barbeque or a sip of your morning coffee. The master bedroom is equipped with a walk-in closet and tiled master bath. One full bedroom is on the main floor. This unit comes with your own two-car garage. Close to 228th Ave SE which turns into Sahalee Way NE.

**YATES
WOOD**

**BROKERAGE
& PROPERTY
MANAGEMENT**

For more information, please contact:

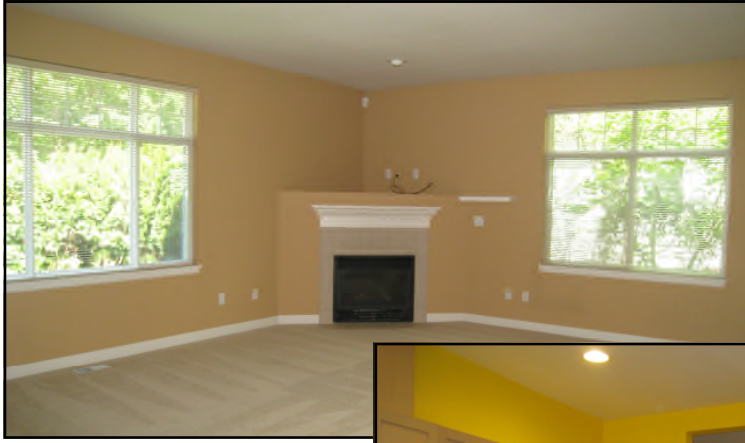
**Mercy Gregorio 206 427 6535
mercy@yateswood.com**

The information contained herein has been given to YW&M by the owners or sources that we deem reliable. We have no reason to doubt its accuracy, but we do not guarantee information contained herein.

Since 1944

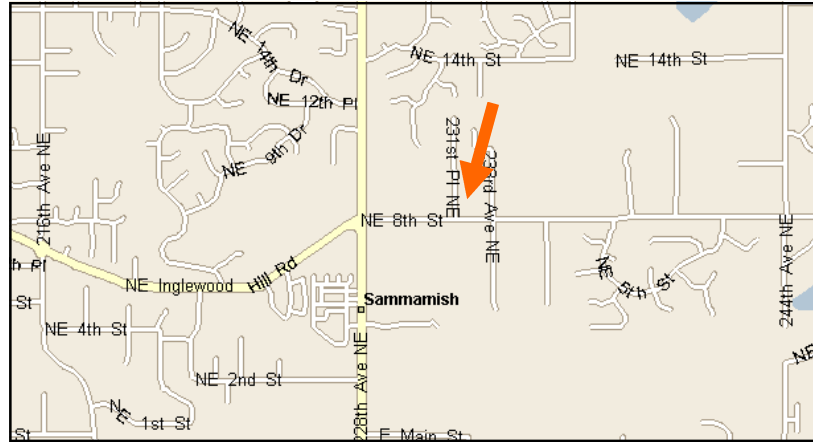
Yates, Wood & MacDonald, Inc., 425 Pontius Ave N Suite 203, Seattle, WA 98109
f 206 268 3330 p 206 268 3300 www.yateswood.com

Sammamish Condominium



Features

- 1,674 sq. ft. condo
- Alarm system
- Vaulted ceilings
- Master with walk-in closet
- Insulated windows
- Washer/dryer included
- Open kitchen with granite countertops
- Utilities paid by resident; electric and natural gas
- Two car garage
- No pets allowed



Our goal is to provide you with a renting experience that will leave you completely satisfied and happy. Yates, Wood & MacDonald, Inc. treats you with integrity and professionalism. We strive to provide you with a living environment that is always clean and in good repair at all times. We are responsive to your needs, value you as a resident and strive to handle your maintenance requests in a timely manner. Yates, Wood & MacDonald, Inc. looks forward to helping you with all of your housing needs. Please call us for a private showing at 206-427-6535.

**YATES
WOOD**

**BROKERAGE
& PROPERTY
MANAGEMENT**

**911 232nd Lane NE, #911
Sammamish, WA 98074**

Since 1944