

COLONIAL SQUARE APARTMENT STUDIOS & 1 BEDROOMS AVAILABLE



39555 SE Park Street, Snoqualmie WA 98065

Available

- Studio apartments at \$715/month plus \$45/month for water & sewer
- 1 Bedroom/1Bath at \$750/month plus \$50/month for water & sewer
- Security deposit of \$250 plus \$100 non-refundable admin fee
- Cats only allowed

Description

Colonial Square is a vintage building built in 1924. It has hardwood floors and period appointments. A laundry room is onsite and plenty of off-street parking for your convenience. Ideally located just outside historic downtown Snoqualmie and by the Snoqualmie River, it is within walking distance to beautiful Riverview Park which features picnic shelters, a basketball court and a playground. Also a quick walk to the high school and easy access to Route 202 and I-90.

\$100 referral bonus to existing tenants if you refer someone

**YATES
WOOD**

**BROKERAGE
& PROPERTY
MANAGEMENT**

For more information, please contact:

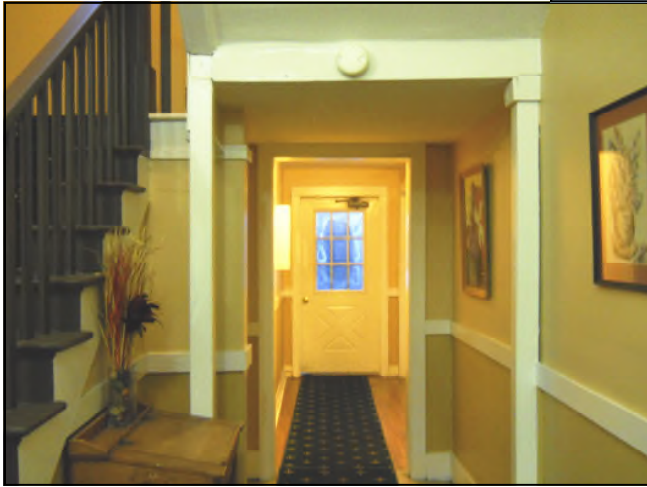
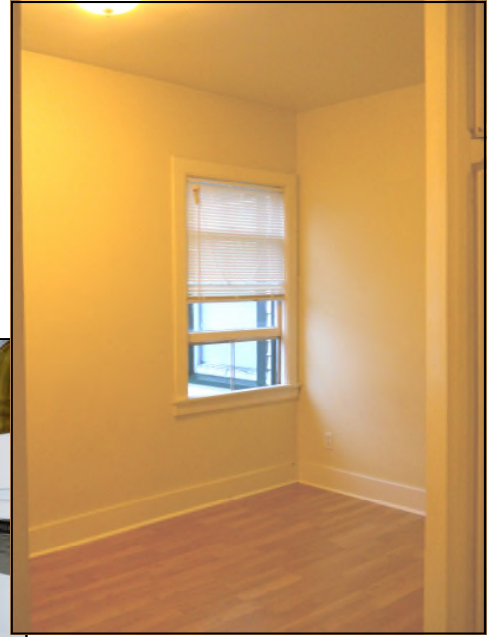
**Mercy Gregorio 206 427 6535
mercy@yateswood.com**

The information contained herein has been given to YW&M by the owners or sources that we deem reliable. We have no reason to doubt its accuracy, but we do not guarantee information contained herein.

Since 1944

Yates, Wood & MacDonald, Inc., 425 Pontius Ave N Suite 203, Seattle, WA 98109
f 206 268 3330 p 206 268 3300 www.yateswood.com

COLONIAL SQUARE APARTMENTS



Features

- 6, 9 and 12 month leases available
- Deposit is \$250 refundable and \$100 non-refundable
- Application fee of \$40 per adult
- Coin-operated washers and dryers
- Blinds on all windows
- Cable and internet ready
- Utilities paid by tenant
- Trash paid by property
- Cats only allowed
- Professionally managed
- Full-time maintenance technician available
- Office hours are Monday-Friday 8:00 a.m.- 5:00 p.m.

**YATES
WOOD**

**BROKERAGE
& PROPERTY
MANAGEMENT**

**39555 SE Park Street
Snoqualmie, WA 98065**

Since 1944