

FREMONT RETAIL FOR LEASE



1500 NW Market Street, Seattle WA 98107

Available Space

- 1,500
- \$25.00/sq ft NNN

Special Features

- 2 blocks from Swedish Hospital, Ballard
- Single story retail building
- Back door, alley access
- Available March 1, 2016

YATES
WOOD

BROKERAGE
& PROPERTY
MANAGEMENT

For more information, please contact:

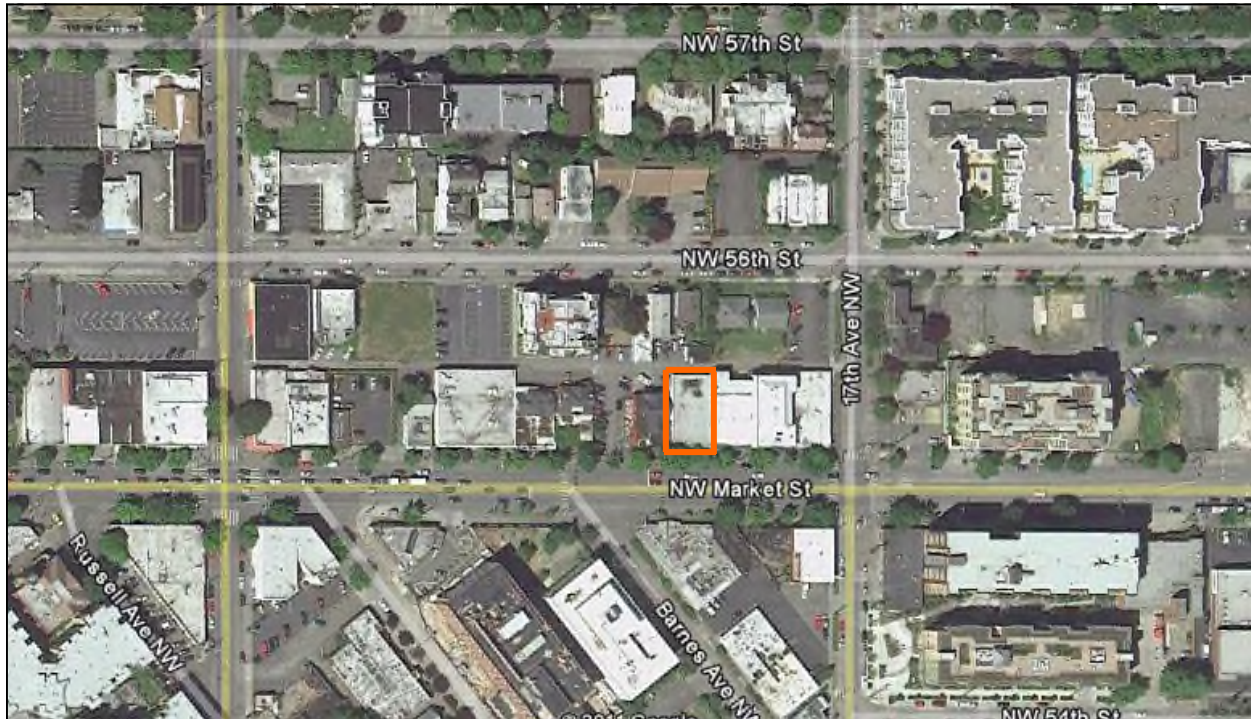
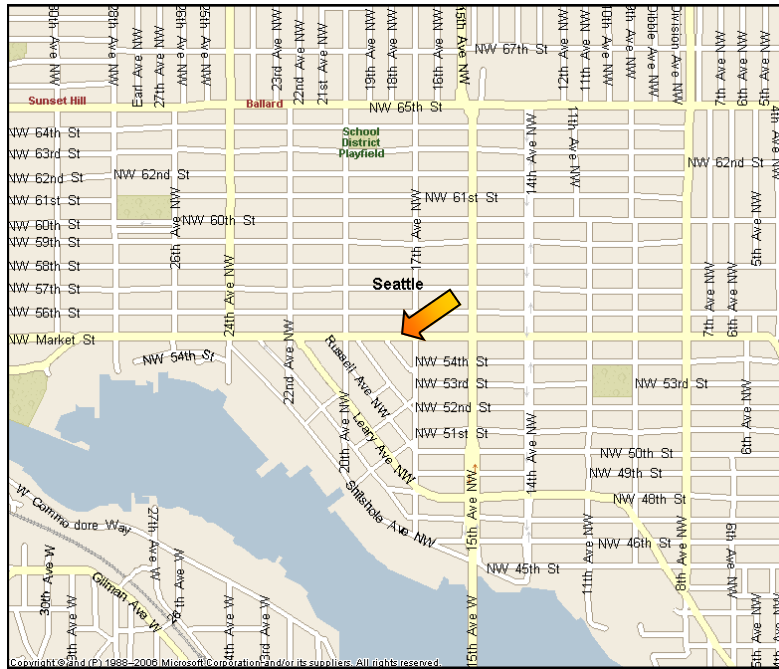
Dennis Counts 206 268 3312
dcounts@yateswood.com

Ellen Mohl 206 268 3311
ellenmohl@yateswood.com

The information contained herein has been given to YW&M by the owners or sources that we deem reliable. We have no reason to doubt its accuracy, but we do not guarantee information contained herein.

Since 1944

Yates, Wood & MacDonald, Inc., 425 Pontius Ave N Suite 203, Seattle, WA 98109
f 206 268 3330 p 206 268 3300 www.yateswood.com



**YATES
WOOD**

**BROKERAGE
& PROPERTY
MANAGEMENT**

**1718 NW Market Street
Seattle, WA 98107**

Since 1944