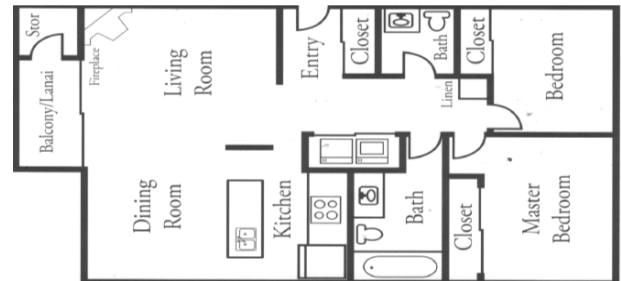
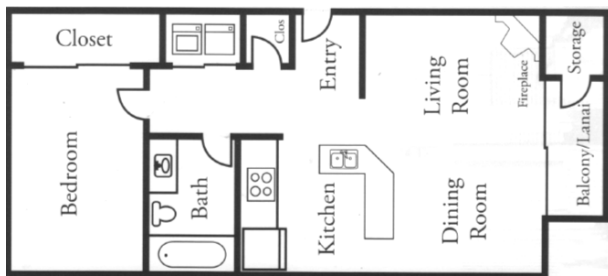


HILLVIEW APARTMENTS

1 & 2 BEDROOMS AVAILABLE



12825 60th Lane South, Seattle WA 98178



Available

- 1 Bedroom/1 Bath ranging from \$895 to \$950 per month
- 2 Bedrooms/1.5 Bath ranging from \$995 to \$1,050 per month
- Small Pets Welcome: \$200 refundable/\$200 non-refundable
- Security Deposit: \$300 refundable/\$100 non-refundable

Description

Hillview Apartments is a cozy, close-knit peaceful community which features all of your living essentials. Hillview provides you with spacious 1 and 2 bedroom homes that include a full size washer & dryer, dishwasher, wood burning fireplace, reserved parking and a large storage unit. Located minutes from all major freeways and highways, Hillview is convenient to downtown Seattle, Tukwila and Renton by both car and bus. Make the Hillview community your home and enjoy relaxing sunsets from your private deluxe patio.

**YATES
WOOD**

**BROKERAGE
& PROPERTY
MANAGEMENT**

For more information, please contact:

**Rhonda Shaeffer 206 772 7005
rhonda@yateswood.com**

The information contained herein has been given to YW&M by the owners or sources that we deem reliable. We have no reason to doubt its accuracy, but we do not guarantee information contained herein.

Since 1944

Yates, Wood & MacDonald, Inc., 425 Pontius Ave N Suite 203, Seattle, WA 98109
f 206 268 3330 p 206 268 3300 www.yateswood.com

HILLVIEW APARTMENTS



Dining Room & Living Room with Fireplace

Features

- Flexible rental terms
- Fireplaces in all homes
- Dishwasher in all homes
- Full size washer and dryer in every home
- Self cleaning ovens & frost free refrigerators
- Ample cupboard space
- Plush wall-to-wall carpet
- Deluxe-size patios
- Free reserved parking
- Cable and internet ready
- Water, sewer and electric paid by resident
- Trash paid by property
- Pets welcome
- Professionally managed with onsite staff
- On-call emergency maintenance
- Office hours are Tuesday-Saturday 9:00 a.m.-5:00 p.m.



Bathroom

**YATES
WOOD**

**BROKERAGE
& PROPERTY
MANAGEMENT**

**12825 60th Lane South
Seattle, WA 98178**

Since 1944