

VOLUNTEER PARK APARTMENTS

STUDIO & 1 BEDROOM UNITS AVAILABLE



1132 10th Avenue E Seattle, WA 98102

Available

- Studios ranging from \$800 to \$900 per month
- 1 Bedroom/1 Bathroom ranging from \$1,000 to \$1,200 per month
- Security deposit equivalent to one month's rent
- 12 month leases only, no pets

Description

The Volunteer Park Apartment building is located within walking distance to Volunteer Park, and new shopping/dining areas of Capitol Hill. Hop a bus and be in downtown Seattle or the UW in minutes. The building is cable ready and has a coin-operated laundry room. Heating is electric and all utilities are paid by the tenant.

**YATES
WOOD**

**BROKERAGE
& PROPERTY
MANAGEMENT**

For more information, please contact:

**Jesse Summers 206-372-5169
volunteerpark@yateswood.com**

The information contained herein has been given to YW&M by the owners or sources that we deem reliable. We have no reason to doubt its accuracy, but we do not guarantee information contained herein.

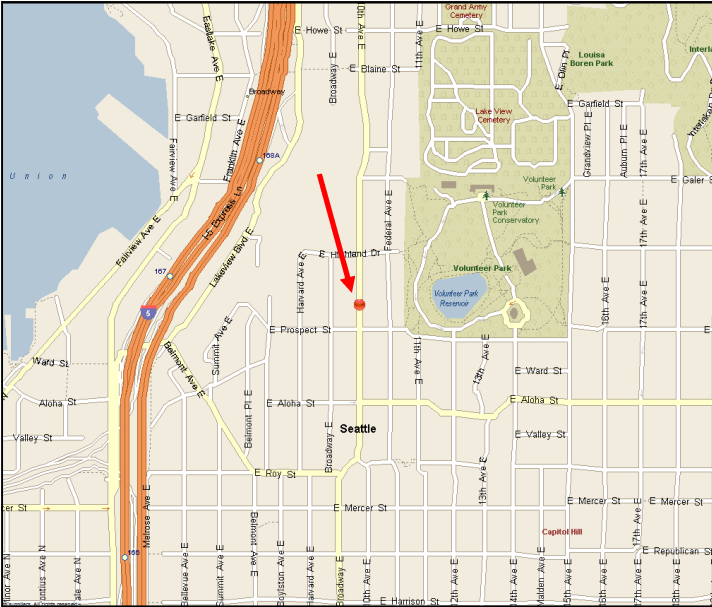
Since 1944

Yates, Wood & MacDonald, Inc., 425 Pontius Ave N Suite 203, Seattle, WA 98109
f 206 268 3330 p 206 268 3300 www.yateswood.com

VOLUNTEER PARK APARTMENTS

Features

- Security deposit equal to one month's rent
- Secure entry
- Coin operated laundry in basement
- Cable and internet ready
- Electric heat
- Water, sewer, and garbage are paid by tenant
- Blinds on all windows
- No pets allowed
- Professionally managed staff available
- Call for appointment to view apartments



Our goal is to provide you with a renting experience that will leave you completely satisfied and happy. Yates, Wood & MacDonald, Inc. treats you with integrity and professionalism. We strive to provide you with a living environment that is always clean and in good repair at all times. We are responsive to your needs, value you as a resident and strive to handle your maintenance requests in a timely manner. Yates, Wood & MacDonald, Inc. looks forward to helping you with all of your housing needs. Please call us for a private showing at 206-372-5169.

**YATES
WOOD**

**BROKERAGE
& PROPERTY
MANAGEMENT**

**1132 10th Avenue E
Seattle, WA 98102**

Since 1944